

ISSN 1943-6548

base line

a newsletter of the

Map and Geospatial Information Round Table

TABLE OF CONTENTS

- 4 From the Chair**
- 5 2015 Chicago Midwinter MAGIRT Schedule**
- 9 On the Cataloging/Cataloguing Front**
- 12 New Maps and Cartographic Materials**
- 14 Great Moments in Map Librarianship**

<http://www.ala.org/magirt/>

**Volume 35, Number 6
December 2014**



base line is an official publication of the American Library Association's Map and Geospatial Information Round Table (MAGIRT). The purpose of base line is to provide current information on cartographic materials, other publications of interest to map and geography librarians, meetings, related governmental activities, and map librarianship. It is a medium of communication for members of MAGIRT and information of interest is welcome. The opinions expressed by contributors are their own and do not necessarily represent those of the American Library Association and MAGIRT. Contributions should be sent to the appropriate editor listed below.

Editor: John A. Olson, Maps/GIS/Documents Librarian, 358 E.S. Bird Library, Syracuse University, 222 Waverly Ave., Syracuse, NY 13244 Tel: 315-443-4818 E-mail: jaolson@syr.edu

Distribution Manager: Kate Dougherty, Geosciences and Maps Librarian, University of Arkansas, Mullins Library, Room 223D, Fayetteville, AR 72701 Tel.: 479/575-2241 E-mail: kmdoughe@uark.edu

Cataloging Editor: Tammy T. Wong, Cartographic Materials Cataloger, Geography and Map Division, Library of Congress, 101 Independence Ave. SE, Washington, DC 20540-2232 Tel: 202/707-6735 E-mail: twon@loc.gov

Electronic Mapping Editor: Carol McAuliffe, Map Librarian, Map & Imagery Library, University of Florida, 110 Marston Science Library, Gainesville, FL 32611 Tel: 352/273-2828 E-mail: carolmc@uflib.ufl.edu

New Maps and Books Editor: David J. Bertuca, Map Librarian, Science & Engineering Library, 225 Capen Hall, University at Buffalo, Buffalo, NY 14260-1672 Tel: 716/645-1332 Fax: 716/645-3710 E-mail: dbertuca@buffalo.edu

Membership and Marketing Committee Chairperson: Jessica Clemons, Science Librarian and Research Funding Specialist, SUNY College of Environmental Science and Forestry, 1 Forestry Drive, Syracuse, NY 13210 Tel: 315/470-6724 E-mail: jclemons@esf.edu

Advertising Rates: For one issue: full page \$100; half page \$50; quarter page \$25. Opposite "Great Moments in Map Librarianship": full page \$150; half page \$80; quarter page \$40.

Send graphic or word processing file as an email attachment to the editor or mail hard copy to editor. Submissions will be re-formatted to the extent necessary to fit the size and proportion requested. Consider that the final size and proportion of a full page is 8 x 10 inches. Advertisers will be invoiced. Mail checks to the MAGIRT Treasurer, payable in U.S. dollars to ALA-MAGIRT.

© American Library Association 2014

312/944-6780

Published by the Map and Geospatial Information Round Table

base line is published electronically six times a year: in February, April, June, August, October, and December. Single printed pre-2008 issues of base line are available at a cost of \$5.00 per issue, U.S. and Canadian orders; \$7.00 per issue for all other foreign orders. Checks, payable to the American Library Association, should be mailed to Jim Coombs, **base line** Production Manager, Maps Library, Missouri State University, 901 S. National, #175, Springfield, MO 65804-0095.

Members of MAGIRT can access **base line** as a benefit of their memberships.

American Library Association personal and institutional members may choose MAGIRT membership for \$20.00 (personal) or \$60.00 (institutional) by so advising the American Library Association, 50 W. Huron St., Chicago, IL 60611.

MAGIRT OFFICERS:

Chairperson:

Paige Andrew, Maps Cataloging Librarian, 126 Paterno Library, Pennsylvania State University, University Park, PA 16802

Tel: 814/867-0786 E-mail: pga2@psu.edu

Vice-Chairperson (Chair-Elect):

Elizabeth Cox, Special Formats Cataloger, Morris Library, Southern Illinois University, Mail Code 6632, 605 Agriculture Drive, Carbondale, IL 62901

Tel: 618/453-5594 E-mail: bcoc@lib.siu.edu

Secretary:

Tami Morse, Associate Librarian Technical Services, University of Wyoming Coe Library Room 635, Dept. 3334, 1000 E. Univ. Ave., Laramie, WY 82071

Tel: 307/766-6386 E-mail: tmorsemc@uwyo.edu

Treasurer:

Mike Smith, Map Librarian/GIS Coordinator, UC San Diego Library 9500 Gilman Drive, 0175R, La Jolla, CA 92093-0175

Tel: 858/534-1248 E-mail: mls003@ucsd.edu

Past Chairperson:

Kathleen Weessies, Geosciences Librarian, Head, Map Library, Michigan State University Main Library, 366 W. Circle Drive W308, East Lansing, MI 48824

Tel: 517/884-0849 E-mail: weessie2@msu.edu

<http://www.ala.org/magirt/>

FROM THE CHAIR

PAIGE ANDREW

THE PENNSYLVANIA STATE UNIVERSITY

Every year time seems to move ever faster for me, so as I write this in the twelfth month of 2014 my tenure as Chair of MAGIRT is nearly half over, and yet there's much going on as MAGIRT moves forward in its activities. At our last Executive Board meeting, held December 5th, some important decisions were made that I need to share, and then I will follow with some quick reminders. Some items from the meeting that impact MAGIRT members include:



- We passed a 2015-2016 MAGIRT Budget that is not significantly different than the current 2014-15 one. This usually happens at the meeting held during Midwinter, so we're ahead of schedule thanks to Beth Cox and your leaders!
- The M&M committee has updated our MAGIRT Brochure content, and their work will go to ALA's Membership unit next to create a finished product for use at future meetings.
- We approved a donation of \$1000 to ALA's Spectrum Scholarship Fund after discussing other scholarship fund options. This doubles what we normally had given in the past but that is because we missed the deadline to fund an Emerging Leader (EL) candidate. We aim not to miss that EL deadline again.
- Secretary Tami Morse has been investigating the ALA Institutional Repository (ALAIR) as an option for placing past and present MAGIRT documents in addition to ALA's existing traditional Archive. She shared her findings, many questions were raised, and we will ask more questions of ALA and fellow round tables before making any decisions about participating in the ALAIR in the future.

**The next Executive Board meeting is scheduled for 2-3 p.m. EST on January 20, 2015. Mark your calendars and please do join us!

REMINDERS: A call for Honors Award candidates was announced by Past Chair Kathleen Weessies -- she will take written nominations until December 19th. Kathleen also posted a call for MAGIRT members needed to run for two offices (Vice-Chair and Treasurer), along with other leadership positions soon to be vacant -- please take this request seriously and consider serving our organization in an active capacity. I can assure you that not only is there work involved, but its rewarding work, so come and be a part of MAGIRT's leadership team.

ALA's 2015 Midwinter Meeting is just around the corner! You will find the MAGIRT schedule on the next page. I look forward to spending time with my MAGIRT colleagues soon in Chicago, not only to conduct business but also for fun and fellowship.

Let me close with sincere and warm wishes for a safe, fun, healthy, and meaningful holiday season to each of you, your family, and your friends.

p.s. Do you have a new colleague with duties related to cartographic resources, GIS services and similar? Be sure to tell them all about MAGIRT and ask them to join!

MAGIRT 2015 Chicago Midwinter Meeting Schedule

Friday, January 30, 2015

To Be Determined (possible tours of a local private historical map collection and/or the Research Library at the Field Museum of Natural History, followed by Dutch Treat Dinner)

Saturday January 31, 2015

<i>TIMES</i>	<i>MEETING/EVENT NAME</i>	<i>HOTEL/OTHER LOCATION</i>
10:30 – 11:30 A.M.	MAGIRT Membership and Marketing, and Online Presence committees meeting	HRM - DuSable/CC 21C
1:00 – 2:30 P.M.	GIS Discussion Group	HIL - Astoria
3:00 – 4:00 P.M.	MAGIRT Map Collection Management Discussion Group	HIL - Astoria
4:30 – 5:30 P.M.	GeoTech Committee	HIL - Astoria

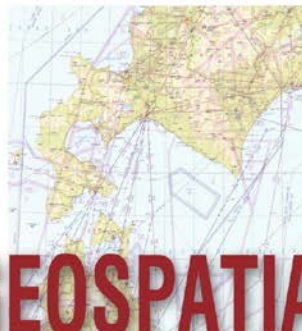
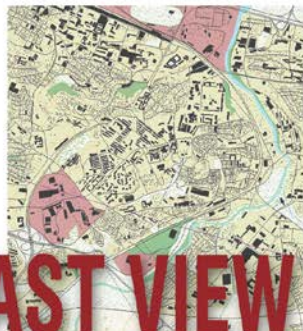
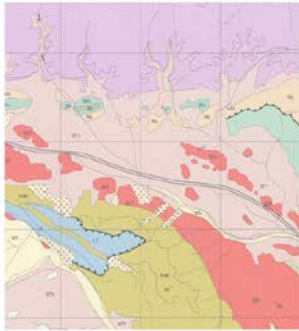
Sunday February 1, 2015

<i>TIMES</i>	<i>MEETING/EVENT NAME</i>	<i>HOTEL/OTHER LOCATION</i>
8:30 – 10:00 A.M.	ALCTS CaMMS/MAGIRT Cartographic Resources Cataloging Interest Group Meeting	MCP - W175a
10:30 – 11:30 A.M.	MAGIRT Catalog & Classif. Committee Meeting	MCP - W187b
1:00 – 2:30 P.M.	MAGIRT Exec Board & Membership Meeting A	MCP - W185a
3:00 – 4:00 P.M.	MAGIRT Exec Board & Membership Meeting B	MCP - W185a
4:30 – 5:30 P.M.	MAGIRT Program Planning Meeting	HRM - DuSable/CC 21C

Below is the list of convention center/hotel abbreviations

- MCP – McCormick Place West**
- BLACK – Renaissance Blackstone
- FAIR – Fairmont Chicago
- HIL – Hilton Chicago**
- HRM – Hyatt Regency McCormick**
- HYATT – Hyatt Regency Chicago *
- SHER – Sheraton Chicago
- SWISS – Swissotel Chicago

*Headquarters Hotel



EAST VIEW GEOSPATIAL

Uncommon Information, Extraordinary Places



East View Geospatial (EVG) is your one-stop provider of authoritative geospatial data and GIS production services and solutions. For over twenty years, EVG has acquired and built a vast archive of global maps and geospatial data, including topographic maps, raster and vector datasets, elevation models, remote sensing imagery, geological maps, nautical charts, atlases and books. Since then, EVG has become the one source to help navigate the many choices of data and to custom build geospatial datasets that meet exacting specifications.

(952) 252-1205 | geospatial.com | geospatial@eastview.com



SimplyMap has all the data you need to answer key research questions, make sound business decisions, and understand the socio-demographic and economic conditions of any geographic area in the United States or Canada. **Explore SimplyMap today!**

The screenshot shows the SimplyMap 3.0 web interface. At the top, there are navigation options like 'New Map', 'New Tabular Report', and '123 New Rankings'. Below that, there are tabs for 'Philadelphia Data Export', 'Income Ranking', 'Target Area Ring Study Report', and 'Philadelphia Housing Map'. The main map area displays a city map with various data layers overlaid, including a legend for '% Housing, Built 1939 or Earlier, 2013 by Census Tracts'. The legend shows five color-coded categories: 0.00% - 15.00% (lightest), 15.01% - 20.00%, 20.01% - 35.00%, 35.01% - 50.00%, and 50.01% - 100.00% (darkest). The interface also includes a sidebar with 'Variables', 'Locations', 'Businesses', and 'Favorites', and a 'Map Legend' panel on the right with 'Map Center' and 'View data by' options.

Contact us for a webinar or free trial: www.geographicresearch.com | sales@geographicresearch.com | 1.888.845.5064 x64



MAGIRT WANTS YOU!



This is your opportunity, citizen's of MAGIRT, to offer your time and energy to serve in one of the leadership positions listed below. Anyone who would like to assume one of the following positions should let me know by December 31, 2014.

Some positions require attendance at the conference while others do not as much (though attendance is usually beneficial). The final decision for appointments is made by the Nominations and Awards Committee, which meets at Midwinter, in accordance with MAGIRT bylaws and best practices <http://www.ala.org/magirt/policies-procedures>

The positions are all more fully described at the link above, or you could contact the current holder of these positions for more information: <http://www.ala.org/magirt/committees>

- Vice Chair – Chair – Past Chair** (a 3 year progression). Pretty much requires attendance at every conference, but we still have plenty of meetings online too.
- Treasurer** (July 2015 through June 2017). Mostly can be done online, attendance at some conferences is appreciated.
- Cataloging & Classification Committee Chair** (July 2015-June 2017). CCC still meets in person at every conference.
- Education** (July 2015-June 2017). Most work is accomplished online. Conferences are, however, still a useful place to meet others for face-to-face conversations.
- Geotech** (July 2015-June 2017). Most work is accomplished online, but in recent years GeoTech has sponsored some exciting tech demonstrations and conversations aside from the usual MAGIRT program at the conferences.
- Membership** (July 2015-June 2017). Mostly meets online. Conferences are, however, still a useful place to meet others for face-to-face conversations and to recruit potential new members.
- Map Collection Management Discussion Group Leader** (July 2015-June 2017). Requires attendance at the conferences to lead the discussion.

Thank you for considering!

Kathleen Weessies
Past-Chair, Map and Geospatial Information Round Table (MAGIRT)
weessie2@msu.edu

esri[®] Understanding Our World

MAGIRT thanks ESRI for supporting MAGIRT activities!

PolicyMap for Schools and Universities.

Get unlimited access to data with our easy-to-use, professional mapping tool.

THE LATEST DATA + EASY-TO-USE MAPPING

PolicyMap is an online data and mapping tool that offers access to national data about communities and markets. It is a powerful tool for research, market studies, and business planning.

TRF
policymap

QUESTIONS / SCHEDULE A DEMO
1-866-923-MAPS (6277)
sales@policymap.com

START YOUR FREE 2-MONTH TRIAL

www.policymap.com/subscribe-site-license

ON THE CATALOGING/CATALOGUING FRONT

TAMMY WONG

THE LIBRARY OF CONGRESS

Library of Congress

CDS Announcement

Phase Three of RDA Changes to Name Authority Records

In April 2013, the Library of Congress and the Program for Cooperative Cataloging (PCC) successfully implemented the new Resource Description and Access (RDA) cataloging standard. To assure compliance with RDA, LC conducted a series of updates to the LC/NACO Authority File (LC/NAF) and to the corresponding bibliographic records in the LC database. Notices about the changes and updates were posted. (See links listed at the end of this announcement.)

Subsequent deliberations with members of the PCC resulted in the formation of the PCC RDA Authorities Phase 3 Task Group. The group is charged with planning and implementing changes to the LC/NAF that will programmatically bring the remaining portion of the LC/NACO Authority File into alignment with RDA as well as populate existing name records with additional enhancements whenever possible.

(See the Task Group charge and details of plans) at:

<http://files.library.northwestern.edu/public/rdaphase3/docs/>

The Task Group's analysis identified several clean-up projects needed prior to final Phase 3 testing and implementation; therefore, the Task Group split the project into two distinct phases: Phase 3A and Phase 3B.

Phase 3A involves the following categories of changes:

- Changes involving the music medium of performance statement (subfield \$m)
- Changes involving subfield \$c of personal names
- Adding a 667 note to undifferentiated personal names records
- Re-formulation of any field 678 not suitable for public display, as 670 fields.
- All changes to the 1XX previously defined for Phases 1 and 2 that were created subsequent to those phases
- Evaluation of the contents of the 370 field
- Replacement of obsolete indicators with blanks, and removal of unnecessary terminal punctuation

Additional enhancements to the name records will include:

- Generate the 046 field as appropriate
- Generate the 382 field from certain music medium of performance statements

A full description of each change can be found in the Task Group's report as noted above. Approximately 350,000 records will be changed in the LC/NACO master file at the Library of Congress. The changes will begin no earlier than December 1st and are expected to be completed by December 19th 2014. Distributions of no more than 30,000 records per day, five days a week, beyond the normal load will be sent to the NACO Nodes and MARC Distribution Service Name Authorities subscribers during that time.

Changes to the LC/NACO authority 1XX field will also in many cases necessitate changes to LC bibliographic records. LC expects to update and distribute those bibliographic records shortly after the Phase 3A changes to the authority records are complete in December.

Phase 3B, the implementation of RDA changes to all records not processed in Phase 1 or Phase 2, will not begin before June 2015.

We will continue to alert subscribers as plans finalize.

Previous RDA Change Announcements

Advance Notice: RDA Changes to Name Authority Records
<http://www.loc.gov/cds/notices/120425.pdf>

More Information on: RDA Changes to Name Authority Records
<http://www.loc.gov/cds/notices/120717.pdf>

Phase Two Begins For RDA Changes to Name Authority Records
<http://www.loc.gov/cds/notices/130305c.pdf>

Increased Bibliographic Record Distribution Resulting From RDA Name Authority Changes
<http://www.loc.gov/cds/notices/130320a.pdf>

Increase Bibliographic Record Distribution to Begin in April 2013
<http://www.loc.gov/cds/notices/130401c.pdf>

Comments may be sent to:

Policy and Standards Division
Email: policy@loc.gov

For more information about CDS Products, contact:
Library of Congress • Cataloging Distribution Service • Customer Services
Washington, DC 20540-4910 USA • Phone: (202) 707-6100 • Fax: (202) 707-1771
Email: cdsinfo@loc.gov • Web: www.loc.gov/cds

30cm Precision Aerial, 50cm Pléiades, 50cm GeoEye,
50cm WorldView, 60cm QuickBird, 80cm IKONOS, 1.5m SPOT 6,
5m RapidEye, 15m ASTER & Landsat, 22m DEIMOS

Academic
Discounts

LANDinfo

WORLDWIDE MAPPING LLC

SATELLITE & AERIAL IMAGERY/PROCESSING
DIGITAL ELEVATION MODELS
VECTOR FEATURE EXTRACTION
SPECTRAL CLASSIFICATION
OBJECT-BASED IMAGE ANALYSIS



Dar es Salaam vector feature extraction: building footprints
QuickBird imagery includes material Copyright © DigitalGlobe - Longmont, CO
Vector Feature Extraction Courtesy of www.landinfo.com

GLOBAL TOPOGRAPHIC MAPS & NAUTICAL CHARTS

Discounted countrywide DRG, vector, DEM and paper map sets

MAP LIBRARY SERVICES

Large-format scanning, geo-referencing, metadata & index creation

Contact us for our free Global Geodata Catalog

DigitalGlobe Distribution Partner • RapidEye Direct Distributor • USGS Business Partner
Authorized Intermap Data Distributor • Astrium GEO-Information Services Image Partner • Esri® Business Partner

tel +1.303.790.9730 • fax +1.303.790.9734

sales@landinfo.com • www.landinfo.com

NEW MAPS AND CARTOGRAPHIC MATERIALS

DAVID BERTUCA

UNIVERSITY OF BUFFALO

“I am told there are people who do not care for maps, and I find it hard to believe.”—Robert Louis Stevenson, *Treasure Island*

I am now in the midst of the move of the University Map Collection. Actual moving begins December 26 but all the preparation needs to be completed before that. Though I have a nice bundle of new maps and interesting carto-fun to display for you, I am unable to complete putting it into a form that will make any sense.

OK, I do want to give you one neat item, especially since it's a time for giving.

Cartography Ornaments

<http://www.zazzle.com/cartography+ornaments>

Just in time for holiday gift giving, this site has a large variety of ornaments in a number of shapes, ready to put on your tree. Each one has a carto-theme. There are maps, early maps, bird's eye views, slogans and other themes.

Each ornament can be ordered in one of seven different shapes. Some also come in snowflake-shaped frames. Prices are reasonable. These items are not only good for Christmas trees, but they can also be hung up in windows, on doors, and almost anywhere.



Map-Themed Gifts

<http://www.cafepress.com/+maps+gifts>

Maps printed on pillows, magnets, towels, curtains, and all sorts of things. Lots of items to choose from and again, reasonably priced. You can customize some of the items to acquire either a pillow or a pet name tag that uses the same map. This site has a 20% off sale for the holidays too.



Please enjoy the end of the semester and have a great holiday season. I look forward to writing to you next year from my new office where hopefully order will have been restored and I have gone back to my normal level of chaos.—DJB

Another opportunity for service to MAGIRT

Nancy Kandoin is stepping down from her role as the MAGIRT liaison to the ACRL's RBMS (Rare Books and Manuscripts Section). The RBMS Committees page is [here](#) and their meeting schedule for ALA Midwinter 2015 is [here](#). If interested in this Committee liaison opportunity use the volunteer form.

RBMS volunteer form: <http://www.ala.org/acrl/membership/volunteer/volunteer>

The deadline for submitting applications through the volunteer system is February 15, 2015. Appointments take effect July 1, 2015.

Most committee meetings are open and do not require a formal appointment to attend and participate. It's a great way to get to know how specific committees work, what their current tasks are. It's also a great way of introducing yourself to committee chairs and members.

Great Moments In Map Librarianship by Jim Coombs

