

A background graphic on the left side of the slide featuring a network of white nodes and lines on a gradient background transitioning from orange to purple. The nodes are of varying sizes and are connected by thin white lines, creating a complex web-like structure.

# ***Gigabit Libraries and Beyond: Improving Broadband Access Worldwide***

B. Shadrach

ISLD-ALA Webinar

19 October 2021

# Agenda

## Gigabit Libraries and beyond

- Access to knowledge
- Role of Libraries

## Improving broadband access worldwide

- Digital development
- Affordable and Meaningful connectivity
- Cost of exclusion
- Community Access





# Access to knowledge

Information poverty is that situation in which individuals and communities, within a given context, **do not have the requisite skills, abilities or material means to obtain efficient access to information, interpret it and apply it appropriately**

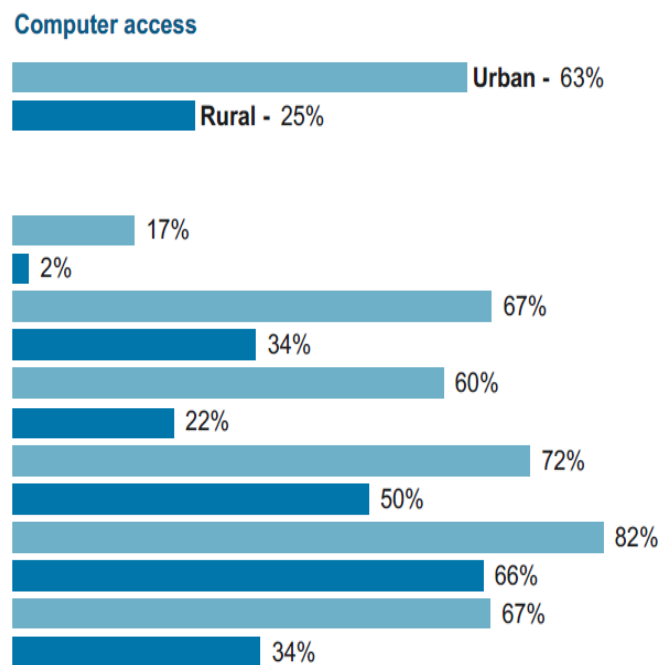
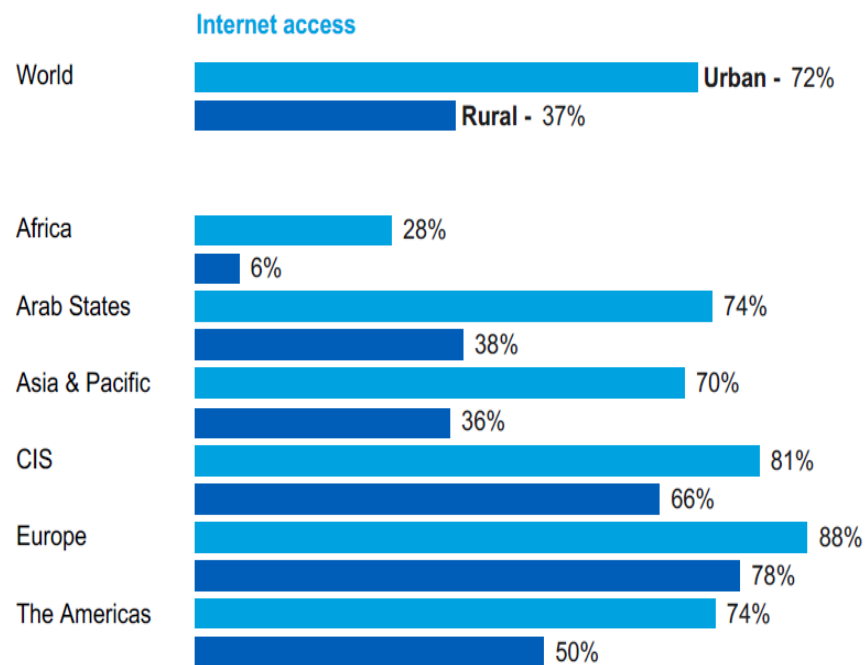
# Access to knowledge

- Participation
- Economic empowerment
- Justice
- Freedom

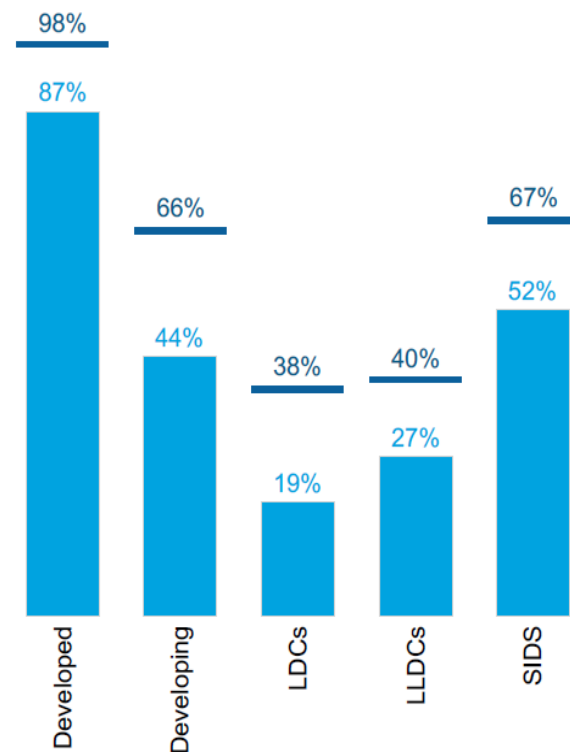
Actand-Action-Actor-Tool

# Digital Development

Percentage of households with computer and/or Internet access at home, 2019\*

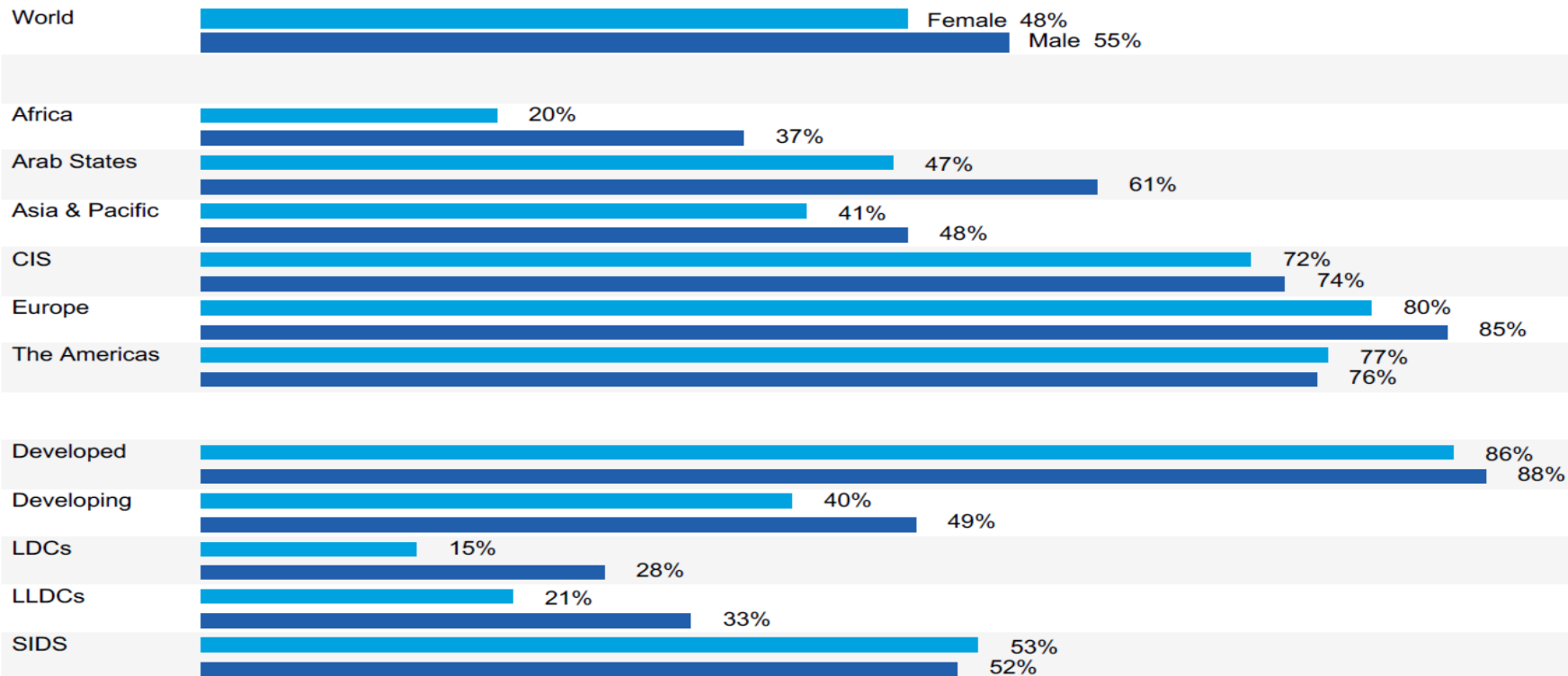


Percentage of individuals using the Internet, 2019\*



# Digital Development

Percentage of female and male population using the Internet, 2019\*



\* ITU estimate. Source: ITU

Policy  
Spectrum  
Infrastructure  
Costs  
Access  
Affordability  
Devices  
Content  
Skills  
Taxation

# Affordable and Meaningful connectivity

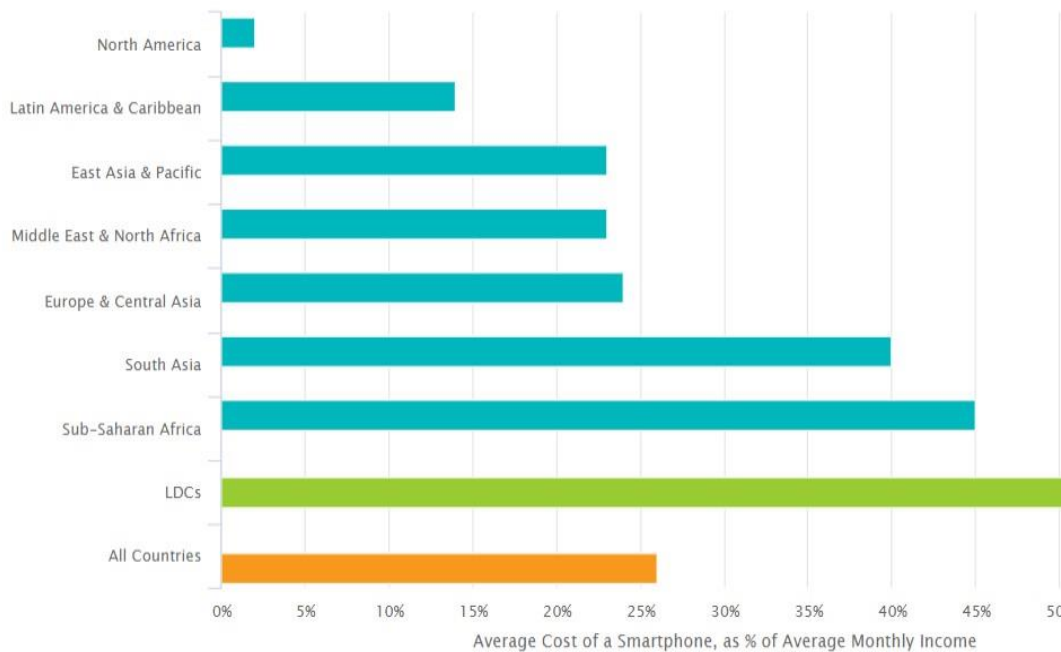
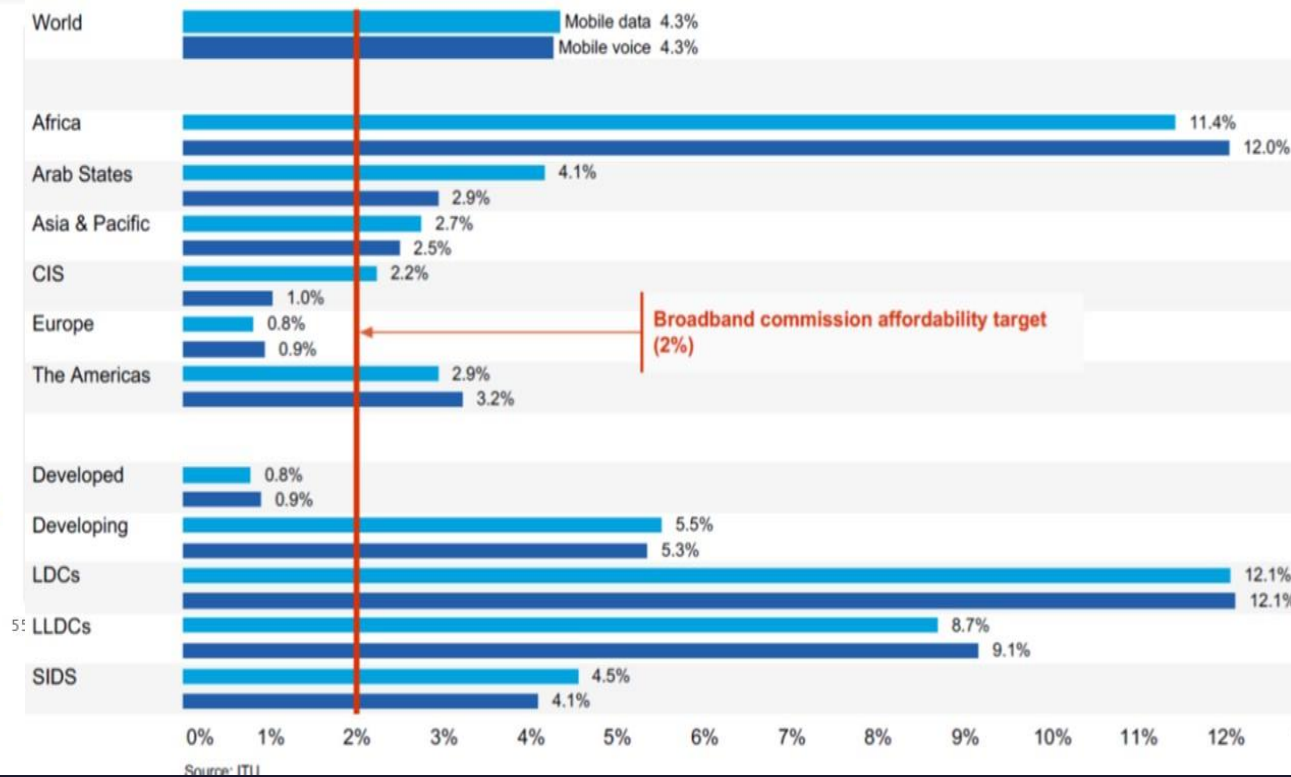


Figure 1 – Smartphone Affordability by Region | Source: Alliance for Affordable Internet (Made with Highcharts)

## Affordability of ICT services increasing, but barriers to Internet uptake remain

Mobile-voice and mobile-data basket prices as a % of GNI p.c., 2019



# Affordable and Meaningful connectivity

## DEVELOPING THE RURAL BROADBAND POLICY FRAMEWORK

- 1** Broadband policies should improve the availability of high-quality, affordable broadband services in underserved rural areas.
- 2** Rural broadband policies should draw from real-world experience – locally, regionally, and globally.
- 3** Rural broadband policies should harness the resources and capabilities of the private sector and complementary providers, such as community networks.
- 4** Rural broadband policies should be comprehensive.
- 5** Rural broadband policies (and all broadband policies) must be gender responsive.
- 6** Effective implementation will require evidence and standards – internet with defined broadband speeds, relevant devices, etc.



## Meaningful connectivity

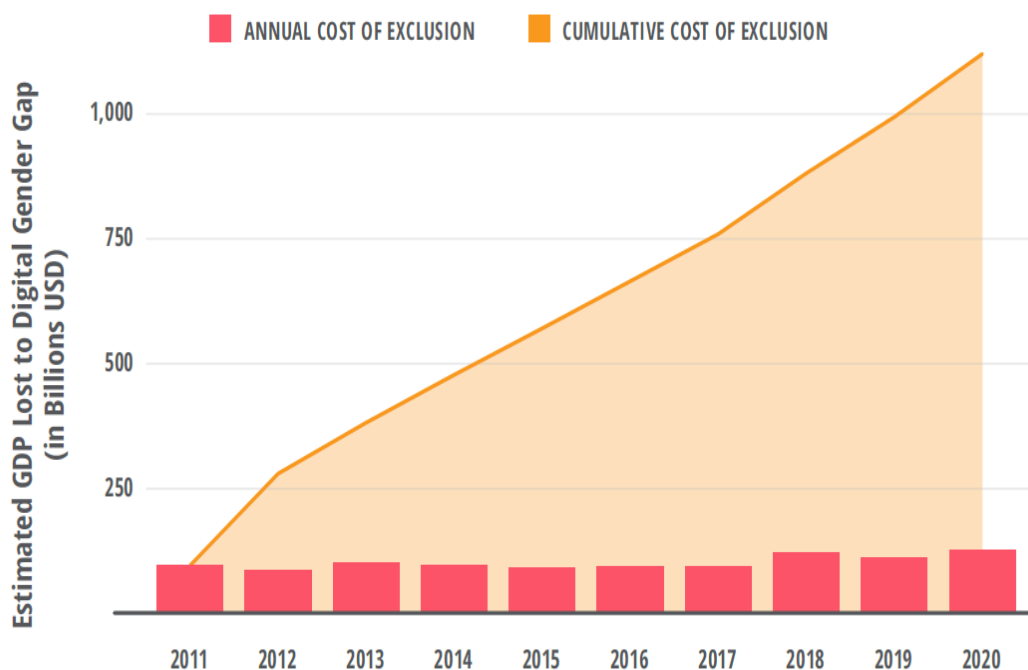
- Getting the right speed
- Having an appropriate device
- Connecting with enough data
- Using the Internet regularly



# Cost of exclusion

- There is substantial gender gap
- Loss to the GDP
- Loss of productivity

**Figure A.** Cumulative cost of women's exclusion from internet use in 32 countries, 2011–2020



Source: Alliance for Affordable Internet, 2021



# Role of Libraries and Librarians



## Advocacy

Broadband for libraries

Rights and Justice

Cost of exclusion

## Democratization

Knowledge Networks

Freedom and choice

Participation

## Capability-building

Skilling, reskilling and  
upskilling

Livelihoods

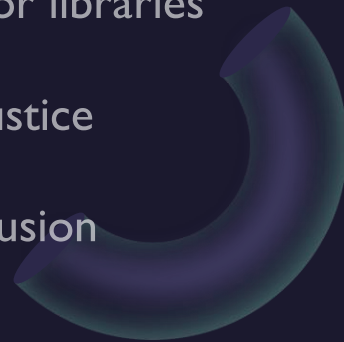
Productivity

## Bridging the divide

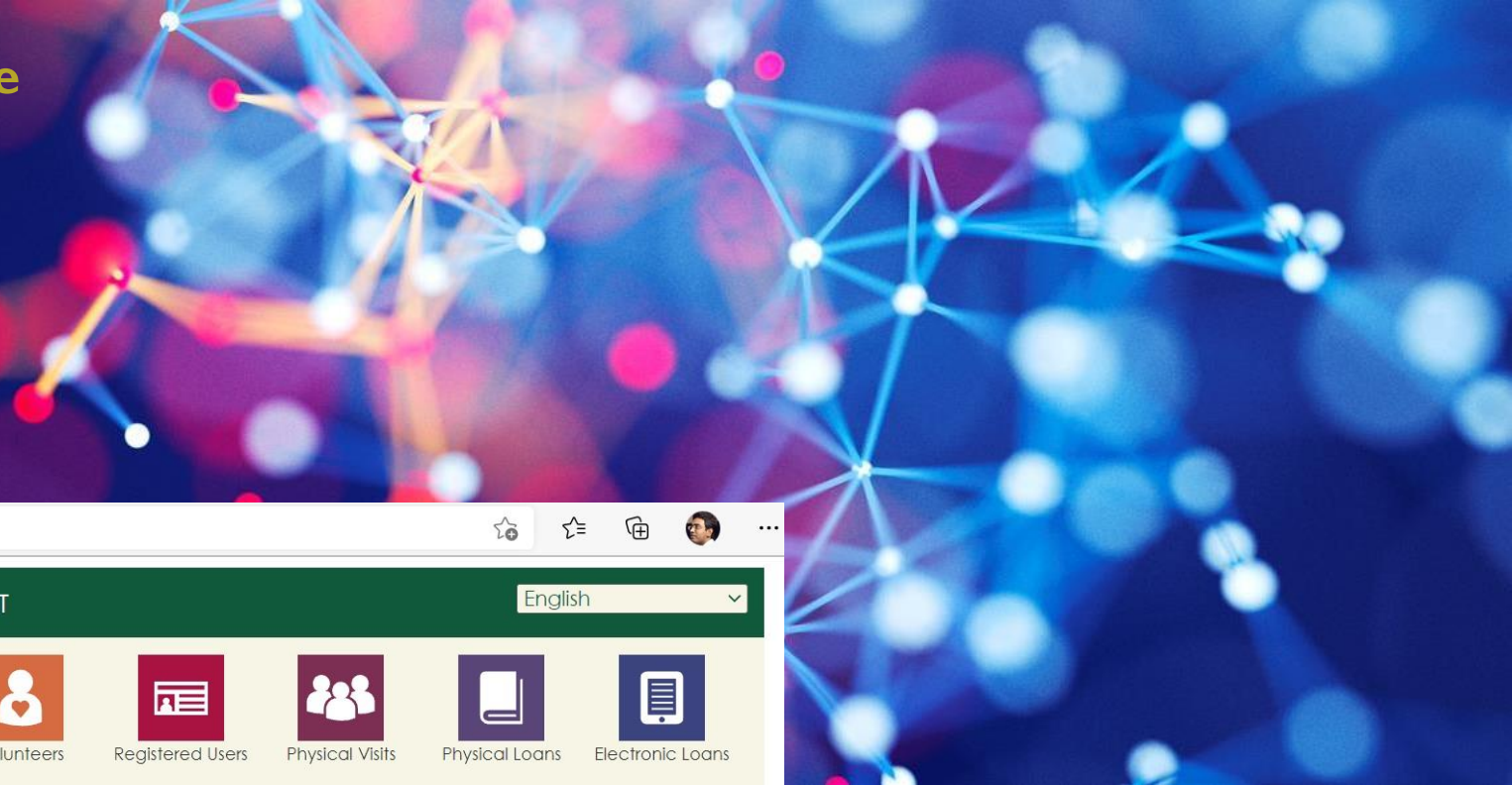
Free, meaningful,  
affordable access

Inclusive and  
equitable access

Community access



**Libraries, as democratic institutions, have the ability to advocate, democratize, popularize and enhance affordable, meaningful and equitable access; build human capabilities; thus, transform societies and empower communities.**



← → ↻ 🔒 https://librarymap.ifla.org/map

HOME SDG STORIES COUNTRIES CONTRIBUTORS ABOUT English

**LIBRARY MAP OF THE WORLD**  
Selected library performance metrics provide national level library data across all types of libraries in all regions of the world. Adjust map view settings to search by country and explore worldwide totals.

Number of Libraries	Libraries with Internet Access	Full-Time Staff	Volunteers	Registered Users	Physical Visits	Physical Loans	Electronic Loans
<b>2.6 M</b>	<b>382,581</b>	<b>1.6 M</b>	<b>907,958</b>	<b>1,117.6 M</b>	<b>6,052.6 M</b>	<b>9,055.7 M</b>	<b>13,503.2 M</b>

**WORLDWIDE TOTALS +**

Search by Country

**2.6 M**  
Total Libraries

LIBRARY TYPE	TOTAL	YEAR
National	351	2021
Academic	95,148	2021
Public	406,813	2021
Community	25,193	2020
School	2.1 M	2020
Other	37,536	2021

<0.1% 3.6% 15.5% 1.0% 78.4% 1.4%

LEGEND  
■ Selected Country  
■ Data Available  
■ No Country Data

HOME SDG STORIES CONTRIBUTORS ABOUT PRIVACY POLICY COPYRIGHT DISCLAIMER NOTICE & TAKEDOWN

# Summary

# Thank You

B Shadrach

[me@shadrach.in](mailto:me@shadrach.in)

<http://lboro.academia.edu/bshadrach>

