

# Equity Work in a Homeless System of Care

---

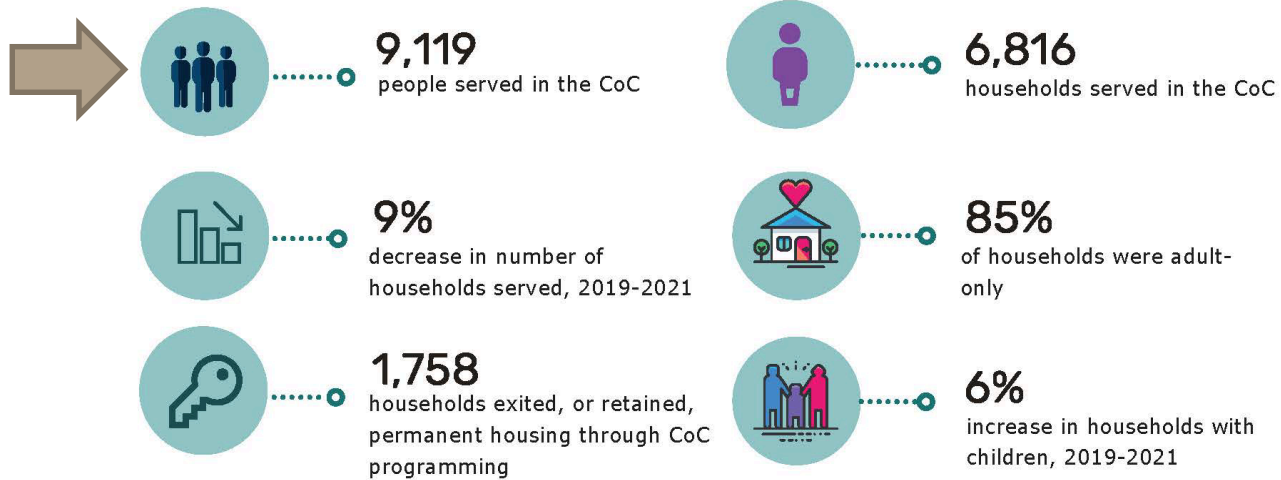
*Jaime Jenett, MPH  
Community Engagement Specialist*

# 2021 Continuum of Care (CoC) Data Summary

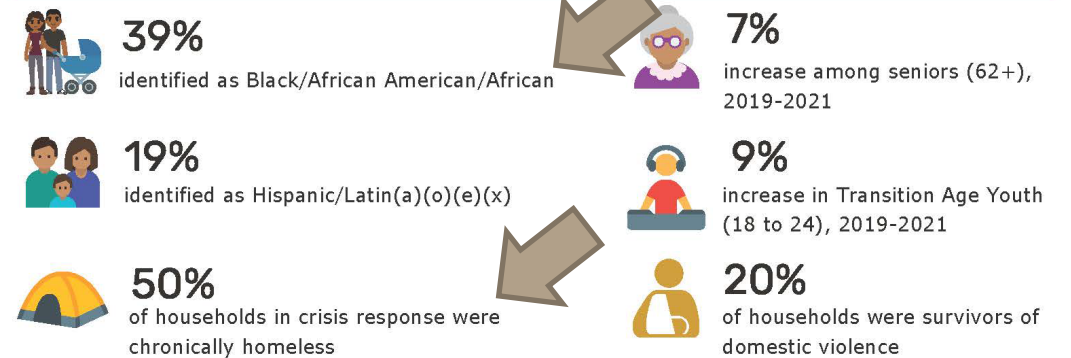
## CoC Efforts to Address COVID-19

More than two years after COVID-19 significantly affected the community, we can now understand the impact of program and policy changes that were a response to the pandemic. People experiencing homelessness were a priority population to prevent the spread of COVID-19. The CoC's efforts to reduce the spread of COVID-19 included decompressing emergency shelters by opening hotel programs funded by Project Roomkey, prioritizing seniors and people with chronic health conditions for shelter beds, and increasing services for people sleeping outside.

### CoC Data for All Programs



### Demographics for Households in the CoC



### # of Households Served



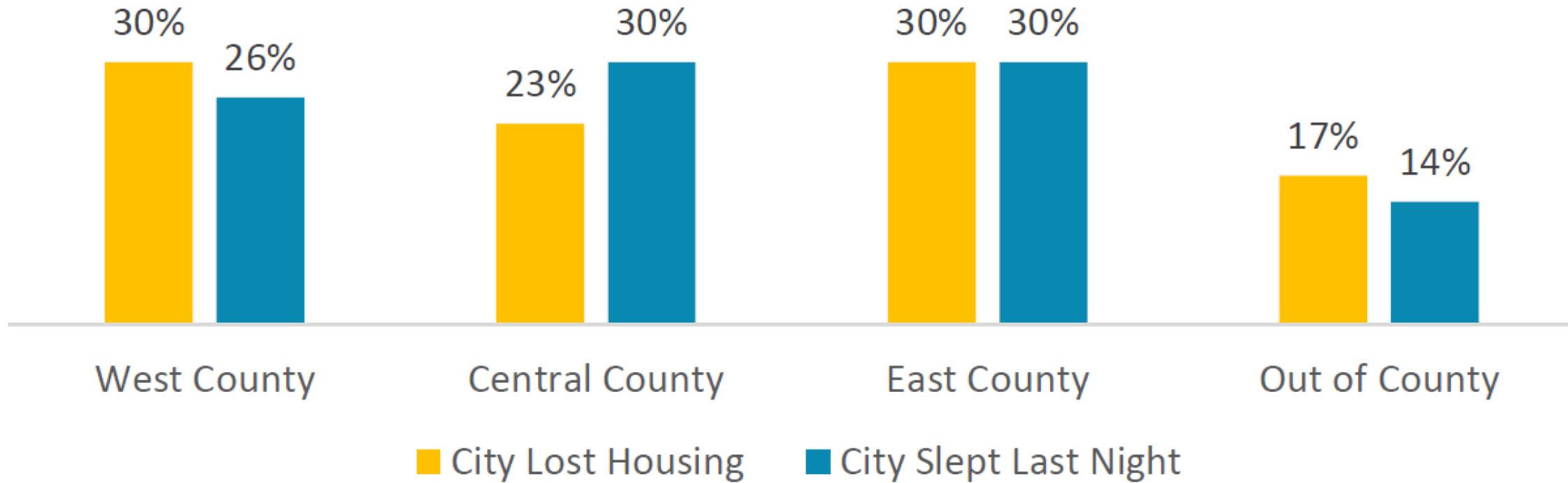
### Exits to Permanent Housing



Black/African American/African and American Indian/Alaska Native/Indigenous were overrepresented in the CoC relative to the general population in the county (4x and 8x, respectively)

# Data by Region

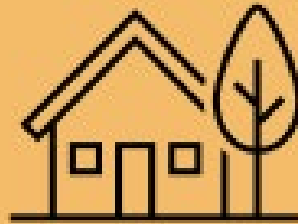
Figure Thirty-One: Where Households Lost Housing and City Where Slept Before Enrollment, by Region, 2021



# EXITS TO PERMANENT HOUSING

---

Black/African  
American/African had  
the highest exits rates to  
permanent housing from  
CoC



# Contra Costa County's Homeless Continuum of Care (CoC) Structure



<b>LEADERSHIP</b>	<b>CoC Governing Board</b>	<b>Contra Costa Council on Homelessness (CoH)</b>
	<b>CoC Lead Agency HMIS Lead Agency Administrative Entity</b>	<b>Contra Costa Health Services, Health, Housing &amp; Homeless Services Division (H3)</b>



<b>PROVIDERS</b>	Prevention /Diversion	Rapid Exit	Outreach	Emergency Shelter	Transitional Housing	Rapid Rehousing	Permanent Supportive Housing	Permanent Housing
------------------	-----------------------	------------	----------	-------------------	----------------------	-----------------	------------------------------	-------------------



<b>PARTNERS</b>	Healthcare	Veterans Affairs	Criminal Justice & Legal Services	Victim Services	School Districts	Workforce	Public Safety	Libraries
-----------------	------------	------------------	-----------------------------------	-----------------	------------------	-----------	---------------	-----------



<b>STAKEHOLDERS</b>	Cities	County	Community Members	Community Orgs	Funders
---------------------	--------	--------	-------------------	----------------	---------

# Equity Work in Contra Costa CoC



## Racial Equity Action Lab (REAL)

- 2020-2021
- BARHII
- Recommendations re PWLE
- Staff, PWLE, community partners



## Equity Assessment

- 2020-2022
- C4 Innovations
- Report plus 4 trainings plus PWLE Engagement Guide



## Working Group

- 2022
- COH members plus community members
- Focus Groups
- Selected priority and proposed structure



## Equity Committee

- 2022
- Connected to COH
- Building 2023 Work Plan



## 2023 Priority

- 2022
- Communication tools and channels



# Racial Equity Action Lab



## Participants

- CBOs
- City Staff
- Council on Homelessness
- County Administrator's Office
- County Supervisor's office
- Employment and Human Services Department
- Health Services
- Office of Education
- Office of Reentry and Justice
- Homeless Youth Action Council

## Contra Costa Goal:

- *"Develop a strategic plan aimed at building relationships and developing opportunities to strengthen/amplify/elevate the voices of consumers."*

# Equity Assessment and Tools

---



## Assessment

- Report with 51 recommendations

## Training

- Series of 4 for CoC

## Guide

- Building Authentic Relationships with People With A Lived Experience of Homelessness



# Working group



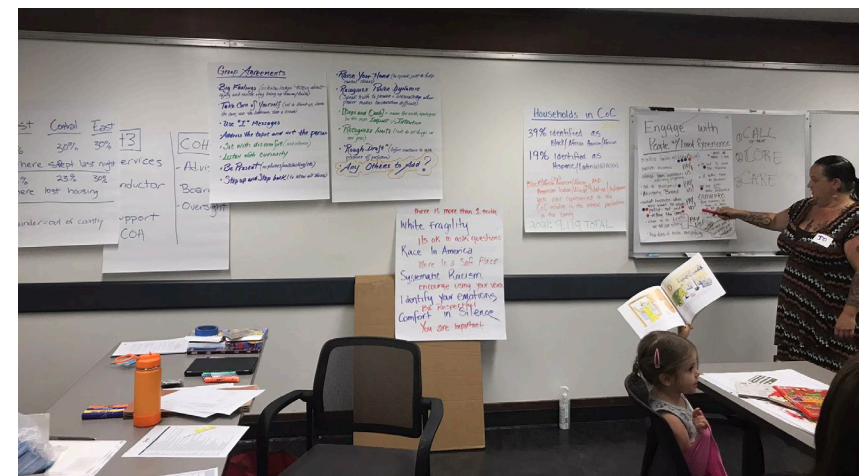
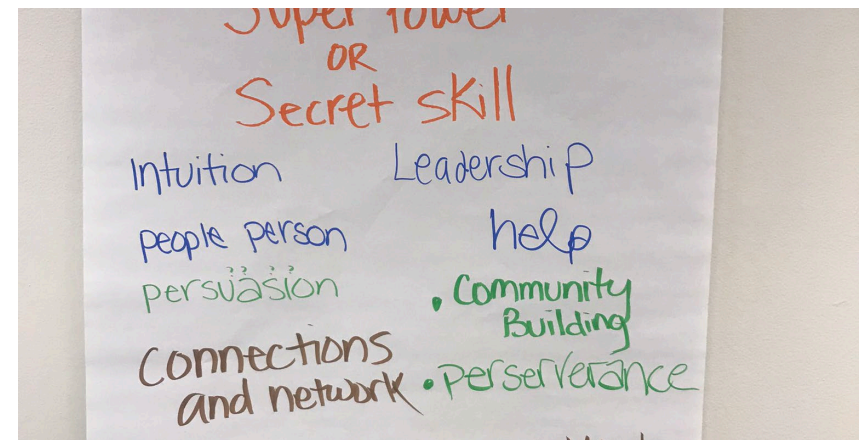
## Tasks

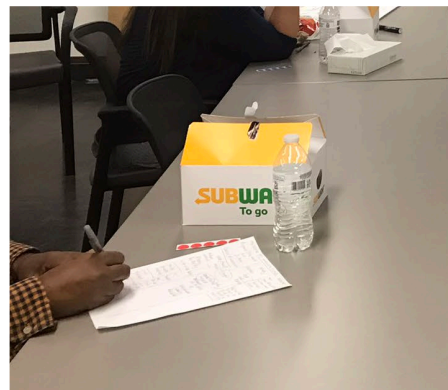
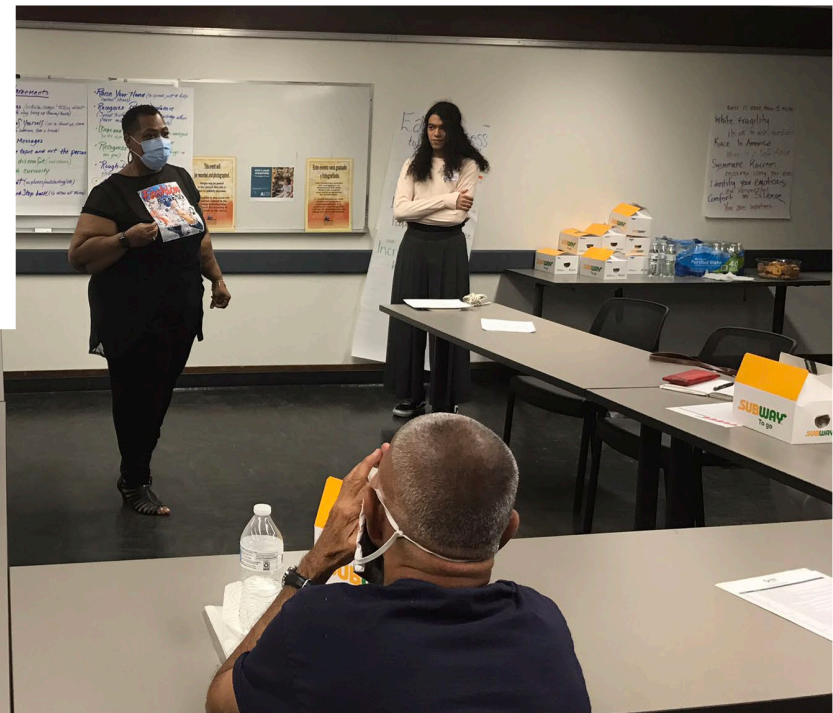
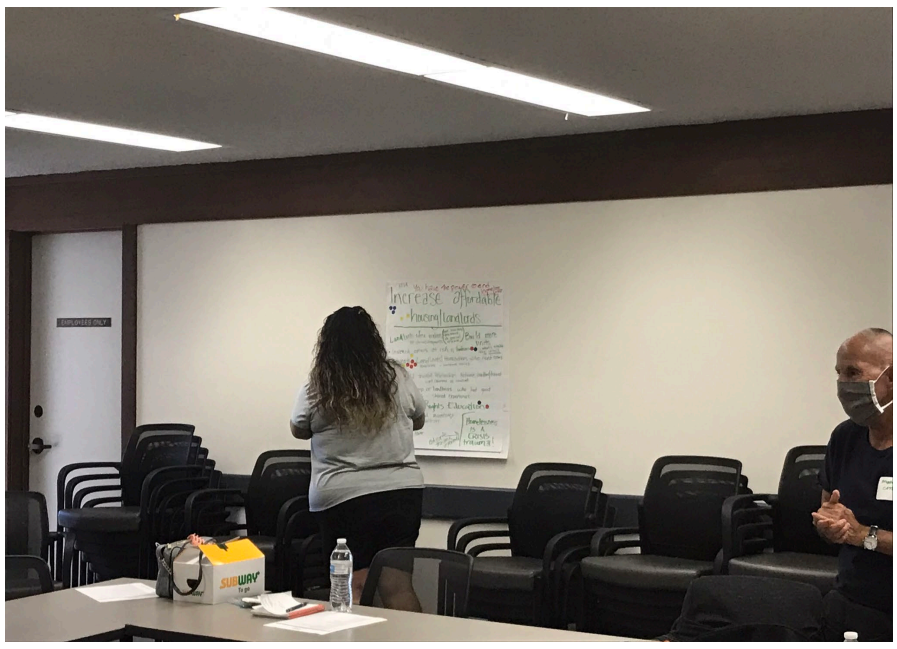
- Select priority for 2023
- Propose structure

## How

- Staff selected 11 priorities
- Held 4 input sessions
- Working Group developed priority recommendation







# 2023 Equity Committee Goal

- *“Create accessible information, outreach, and educational materials to engage hard to reach or previously unreached communities in Contra Costa County.”*



# Ways Libraries Can Engage

## Amplify

- Service access point information
- Recruitment of PWLE
- Data and Opportunities to Engage

## Participate

- Community input opportunities
- CoC meetings (join your CoC board!)

## Host

- Events/gathering (Coffee and Conversation)
- Computer access so PWLE can participate in meetings
- Private space for clients to meet with outreach staff

# Resources

- Contra Costa CoC Equity Page:  
<https://cchealth.org/h3/coc/#Equity>
- Racial Equity Action Lab Recommendations:  
<https://cchealth.org/h3/coc/pdf/Equity-REAL-Recommendations-and-Project-Summaries.pdf>
- C4 Innovations Equity Assessment:  
<https://cchealth.org/h3/coc/pdf/Equity-Assessment-Findings-Presentation.pdf>
- Contra Costa CoC meetings:  
<https://cchealth.org/h3/coc/council.php#Meetings>

**Jaime Jenett, MPH**  
**Community Engagement Specialist**  
**Contra Costa Health, Housing and Homeless Services**  
**[Jaime.jenett@cchealth.org](mailto:Jaime.jenett@cchealth.org)**  
**925-464-0152 (cell)**

---