

# Background

- Currently Director of Programs at Digitunity ([www.digitunity.org](http://www.digitunity.org))

*Mission to eliminate the technology gap*

- Formerly Director of Education at Providence Public Library in Providence, RI ([www.provlib.org](http://www.provlib.org))

*Robust collaboration of workforce development, adult education and afterschool programming in RI*

# Data Literacy Journey

They can't do it.

We can't do it.

They have to do it.

We need to do it.

***We want to do it.***

## Data Literacy Journey

*How?*

- Data Literacy Classes for Teens
- Data for Good
- Tableau Racial Equity Hub and Technology Gap Map
- Resources

# Data Literacy Classes for Teens

## STRUCTURE

- Afterschool
- During the school day
- Summer employment
- Project based

## AUDIENCE

- High school students
- Highly diverse
- Charter High School Nursing students

## PARTNERSHIPS

- RI Dept of Education
- Afterschool Alliance
- Businesses
- Workforce Development
- Roger Williams University
- Civic Switchboard

## FUNDING

- Advanced Course Network
- City and state summer employment and workforce development
- Corporate grants
- IMLS

## CHALLENGES

- Adapting to various structures and requirements
- Finding instructors
- Non-native English Speakers
- Finding data

## OUTCOMES

- High school and college credit
- Students taking next step
- Hiring students as TA's

# Data For Good

## STRUCTURE

- For youth, summer employment program and school year
- For adults, part of Tableau User Group

## AUDIENCE

- High school students
- Adult professionals
- Job seekers
- Volunteers

## PARTNERSHIP

- State Workforce System
- Community Nonprofits
- Tableau

## FUNDING

- City and state workforce development funds
- Library funds
- IMLS

## CHALLENGES

- Figuring out structure
- Very few challenges

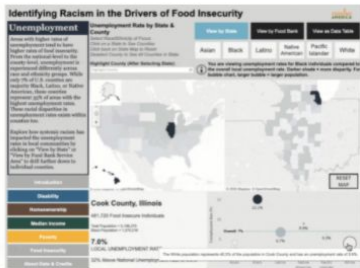
## OUTCOMES

- Nonprofits stronger
- Increased skills and experience
- Networking
- Employment

# Tableau's Racial Equity Data Hub

# Digitunity's Technology Gap Map

Racial Equity Data Hub [Featured Content](#) [Submission Guidelines](#) [Core Focus Areas](#) [For Partners](#) [Resources & Training](#)



## Feeding America: Identifying Racism in the Drivers of Food Insecurity

This dashboard from Feeding America tracks five key variables that impact one's ability to access food—poverty, disability, homeownership, unemployment, and median income. Explore each of these indicators at the state and food-bank level to understand how systemic disenfranchisement shows up as racial disparities across these five indicators and ultimately, food insecurity.

[EXPLORE THE DATA](#) →

[READ THE BLOG](#) →

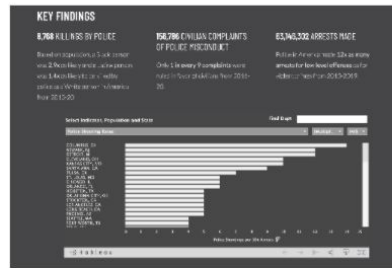


## Dr. Lawrence Brown: Baltimore's Black Butterfly and White L

The visualization focuses on the hypersegregation in the city of Baltimore. Dr. Lawrence Brown, a professor at Morgan State University, coined the description of the Black Butterfly and the White L to show the geography of entrenched racism and the sharp divides between white and Black neighborhoods. The dashboard shows how these divides manifest geographically and in the data.

[EXPLORE THE DATA](#) →

[READ THE BLOG](#) →



## Campaign Zero: Police Scorecard

In this comprehensive, unique data resource, users can explore data on over 16,000 police and sheriff's departments across the U.S. The data covers a range of indicators related to racial bias in policing, from department budgets to use of force to complaints of misconducts. Data is accessible at the departmental level and also presented nationally for a comparative view.

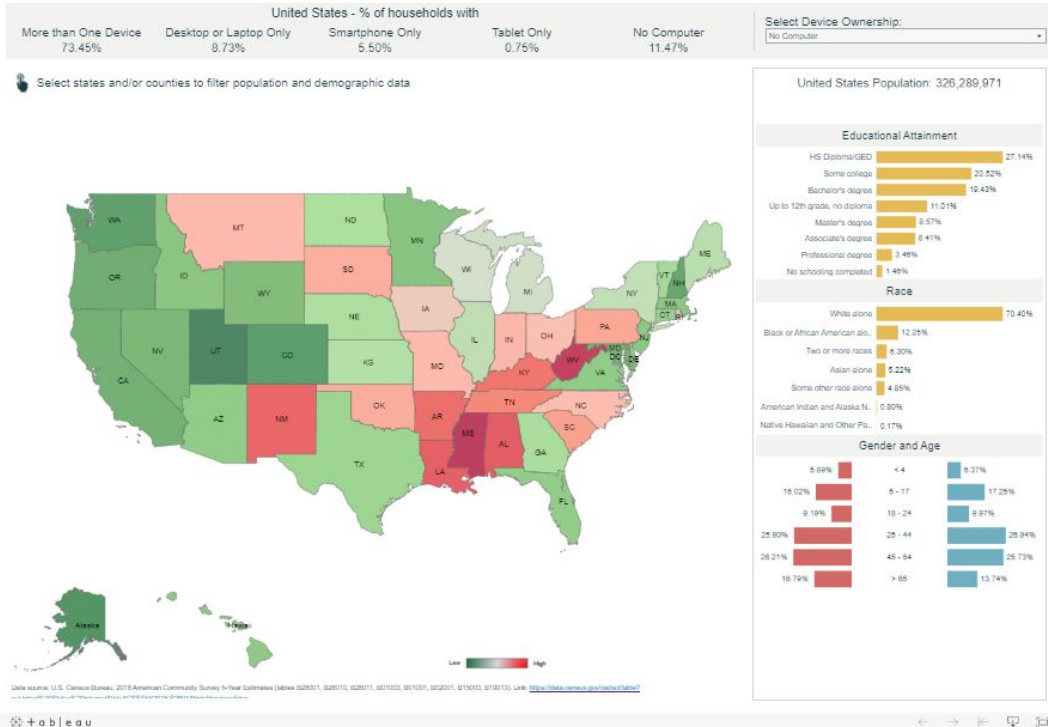
[EXPLORE THE DATA](#) →

[READ THE BLOG](#) →

[SEE MORE RACIAL EQUITY DATA STORIES](#)

## Technology Gap Map

How deep is the technology gap in our nation and your state and county?



# Lessons Learned

## CONTEXT MATTERS

Who, What, Why,  
When

## ROLE OF LIBRARY

Providing the fish or  
Teaching how to fish

## GROWTH

Count on it

1. Providence Public Library's Data Literacy Programs:
  - <https://www.provlib.org/education/teen-squad/data-navigators-2-0/>
  - <https://www.provlib.org/education/teen-squad/summer-data/>
  - <https://www.provlib.org/education/technology-training/>
  - <https://www.provlib.org/education/adults/rhode-island-tableau-user-group-ritug/>
  - <https://www.provlib.org/education/adults/rhode-island-tableau-user-group-ritug/data-for-good/v>
2. Tableau's Data Literacy For All
  - <https://www.tableau.com/learn/data-literacy>
3. Civic Switchboard
  - <https://civic-switchboard.github.io/>
4. Tableau Racial Equity Data Hub
  - <https://www.tableau.com/foundation/data-equity>
5. Urban Institute's Do No Harm Guide
  - <https://www.tableau.com/foundation/data-equity/do-no-harm>
6. Digitunity's Technology Gap Map
  - <https://www.digitunity.org/the-issue/>

# Resources & Thank You

Providence Public Library  
Director of Education  
Chris Bourret  
cbourret@provlib.org

Digitunity  
Director of Programs  
Karisa Tashjian  
Karisa@Digitunity.org