

# EQUITY, DIVERSITY, INCLUSION

## IN THE ACRL NATIONAL RESEARCH AGENDA ON THE RESEARCH ENVIRONMENT AND SCHOLARLY COMMUNICATION SYSTEM

### THE PROJECT

This Emerging Leaders (EL) Team created targeted use cases for how different groups might address the focus areas in the ACRL Research Environment and Scholarly Environment Committee (ReSEC)'s new Research Agenda. These use cases provide a starting point toward identifying practices and delineating research questions that will lead to the creation of more open, inclusive, and equitable scholarly systems.

The EL Team mapped these case studies to four academic library role archetypes (Library Staff/Paraprofessionals, Public Services Librarians, Technical Services Librarians, and Library Administration) as well as four general institution categories (Large Research Universities, Community Colleges, Liberal Arts Colleges, and Minority-Serving Institutions).

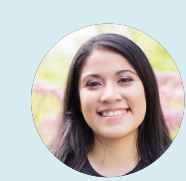
**AN IMPORTANT NOTE:** The project team and ReSEC acknowledge that the roles and institution types do not comprehensively reflect the academic library landscape. *These use studies are meant to serve as a starting point.*

At right, you'll find **prompting questions to spark research ideas** in alignment with the Research Agenda. Each question bubble is mapped to a library role (see color key below) and library type (one for each quadrant). **Consider prompts that align with your job title and location, but we also encourage you to investigate ways you can collaborate with folks outside of your typical duties or default community.** You can find more questions and research suggestions, as well as research benefits, anticipated difficulties, and ways to find partners, in the EL Team's Final Report (at <https://bit.ly/2Hm9jq5>).

### EMERGING LEADERS



Cari Didion  
Librarian,  
Governor's State University



Sheila García  
Resident Librarian,  
Learning Programs & Initiatives  
University of Michigan



Kim Henze  
Reference Librarian for Drama,  
Design + Production,  
UNC School of the Arts



Teresa Schultz  
Social Sciences Librarian,  
University of Nevada, Reno

### KEY



Administrators



Public Service Librarians



Technical Service Librarians



Paraprofessionals and non-librarian staff

## LARGE RESEARCH UNIVERSITIES



## SMALL UNIVER- SITIES + LIBERAL ARTS COLLEGES

## COMMUNITY COLLEGES



## MINORITY- SERVING INSTITUTIONS

Read more at <https://bit.ly/2Hm9jq5>