

Overview of Labor Market Information



Stephanie Holcomb, Research Project Coordinator
John J. Heldrich Center for Workforce Development
Rutgers University

Labor Market Information (LMI)

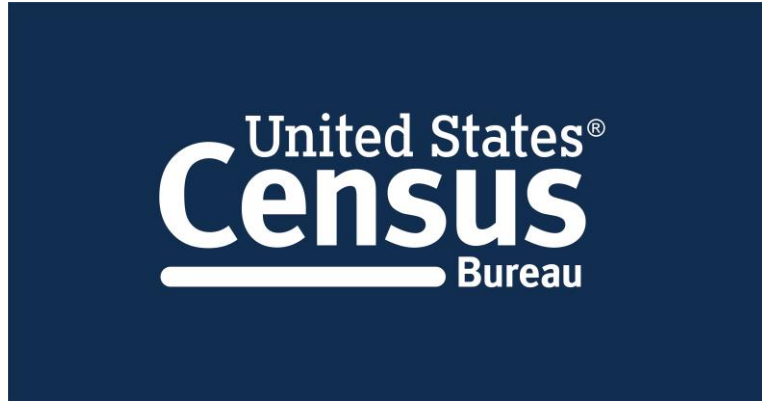
Labor Market Information is all **data** related to **employment** and **workers**.

- Supply
 - Current workforce: Education, age, race, employment history
 - Future workforce: Recent graduates, education and training enrollments, etc.
- Demand
 - Employment, Unemployment
 - Wages, Hours
 - Projections

What can we do with LMI?

- Business investments
- Career planning and preparation
- Education and training offerings
- Job search opportunities
- Hiring and compensation
- Public or private workforce investments
- Program evaluation and planning

LMI Data Sources



Census: American Community Survey (Annually)

- Demographic
 - Sex, age, race, Hispanic origin, etc.
- Social
 - Education, marital status, citizenship, language spoken at home, etc.
- Economic
 - Employment, occupation, industry, commute, household income, poverty status, etc.
- Housing
 - Type of unit, own/rent, age of structure, home value, etc.

Bureau of Labor Statistics Data

- Collections
 - Occupational Employment Statistics
 - Local Area Unemployment Statistics
 - Current Employment Statistics/Current Population Survey
- Geography
 - Country, state, metro areas, counties, cities, towns
- Other data of interest
 - Standard Occupation Classification (SOC)
 - Location Quotients

BLS: Current Employment/Population Surveys (Monthly)

- Household Survey (Current Population Survey)
 - Labor Force/Workers: Number in labor force
 - Employment: Number employed
 - Unemployment: Number looking for work
 - By: Age, Sex, Race, Education, Employment Status
- Establishment Survey (Current Employment Survey)
 - Employment: Number employed
 - Hours: Average weekly hours
 - Earnings: Average hourly and weekly earnings
 - By: Industry

Tools for Data Access

- Census: www.data.census.gov
- BLS: <https://www.bls.gov/data/tools.htm>

Tools for Data Access: Census




[Advanced Search](#)

All **Tables** Maps Pages

[Microdata](#) [Help](#) [FAQ](#) [Feedback](#)

i The 2020 Redistricting Data will be available on data.census.gov no later than September 30th. The redistricting legacy format summary files are now available on the [FTP](#) site. Support materials and additional information are available on the [Redistricting Data Program's summary file webpage](#)

1295 Results [FILTER](#) | [DOWNLOAD](#)

SELECTED ECONOMIC CHARACTERISTICS

Survey/Program: American Community Survey
Years: 2019, 2018, 2017, 2016, 2015, 2014, 2013, 2012, 2011, 2010
Table: DP03

Annual Survey of Manufactures: Summary Statistics for Industry Groups and Industries in the U.S.: 2019 and 2018

Survey/Program: Economic Surveys
Table: AM1831BASIC01

Annual Survey of Manufactures: Geographic Area Statistics: Summary Statistics for Industry Groups and Industries in the U.S. and States: 2019 and 2018

Survey/Program: Economic Surveys
Table: AM1831BASIC02

SELECTED ECONOMIC CHARACTERISTICS

Survey/Program: American Community Survey

Product: 2019: ACS 1-Year Estimates Data Profiles

TableID: DP03

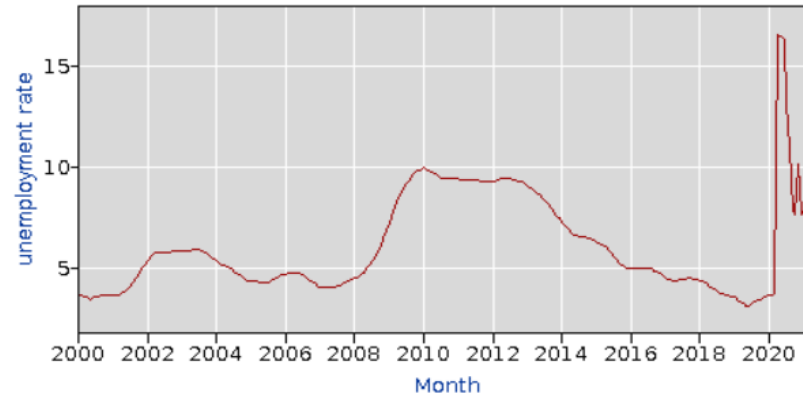
[CUSTOMIZE TABLE](#)

	United States			
Label	Estimate	Margin of Error	Percent	Percent Margin of Error
▼ EMPLOYMENT STATUS				
▼ Population 16 years and over	263,534,161	±52,161	263,534,161	(X)
▼ In labor force	167,501,734	±160,564	63.6%	±0.1
▼ Civilian labor force	166,274,373	±159,720	63.1%	±0.1
Employed	158,758,794	±158,474	60.2%	±0.1
Unemployed	7,515,579	±46,835	2.9%	±0.1
Armed Forces	1,227,361	±17,273	0.5%	±0.1
Not in labor force	96,032,427	±139,347	36.4%	±0.1
▼ Civilian labor force	166,274,373	±159,720	166,274,373	(X)
Unemployment Rate	(X)	(X)	4.5%	±0.1
▼ Females 16 years and over	135,038,002	±37,248	135,038,002	(X)
▼ In labor force	79,377,718	±105,101	58.8%	±0.1
▼ Civilian labor force	79,194,479	±106,079	58.6%	±0.1

Tools for Data Access: BLS

Local Area Unemployment Statistics

Series Id: LASST340000000000003
Seasonally Adjusted
Area: New Jersey
Area Type: Statewide
State/Region/Division: New Jersey
Measure: unemployment rate



Download: [xls](#) [xlsx](#)

Year	Jan	Feb	Mar	Apr	May	Jun	Jul	Aug	Sep	Oct	Nov	Dec	Annual
2000	3.8(R)	3.7(R)	3.6(R)	3.6(R)	3.5(R)	3.6(R)	3.6(R)	3.6(R)	3.7(R)	3.7(R)	3.7(R)	3.7(R)	
2001	3.7(R)	3.7(R)	3.7(R)	3.8(R)	3.9(R)	4.0(R)	4.1(R)	4.3(R)	4.6(R)	4.8(R)	5.0(R)	5.2(R)	
2002	5.4(R)	5.6(R)	5.7(R)	5.8(R)	5.8(R)	5.8(R)	5.8(R)	5.8(R)	5.8(R)	5.9(R)	5.9(R)	5.9(R)	
2003	5.9(R)	5.9(R)	5.9(R)	5.9(R)	6.0(R)	6.0(R)	6.0(R)	5.9(R)	5.8(R)	5.7(R)	5.6(R)	5.5(R)	
2004	5.4(R)	5.3(R)	5.2(R)	5.2(R)	5.1(R)	5.0(R)	4.9(R)	4.8(R)	4.7(R)	4.6(R)	4.5(R)	4.4(R)	
2005	4.4(R)	4.4(R)	4.4(R)	4.3(R)	4.3(R)	4.3(R)	4.3(R)	4.4(R)	4.5(R)	4.6(R)	4.7(R)	4.7(R)	
2006	4.7(R)	4.8(R)	4.8(R)	4.8(R)	4.8(R)	4.8(R)	4.7(R)	4.6(R)	4.5(R)	4.4(R)	4.3(R)	4.2(R)	
2007	4.1(R)	4.1(R)	4.1(R)	4.1(R)	4.1(R)	4.1(R)	4.2(R)	4.2(R)	4.3(R)	4.3(R)	4.4(R)	4.5(R)	
2008	4.6(R)	4.6(R)	4.7(R)	4.8(R)	5.0(R)	5.2(R)	5.4(R)	5.6(R)	5.9(R)	6.2(R)	6.5(R)	6.9(R)	
2009	7.3(R)	7.8(R)	8.1(R)	8.5(R)	8.7(R)	9.0(R)	9.2(R)	9.4(R)	9.6(R)	9.8(R)	9.9(R)	9.9(R)	

Tools for Data Consumption: QWI

Geography Level

New Jersey

Indicator

Emp - Beginning of Quarter Employment: Count

Get Data

Share

Get Report

Filters/Aggregations

Time: X-Axis

Geography: Group

Industries: None

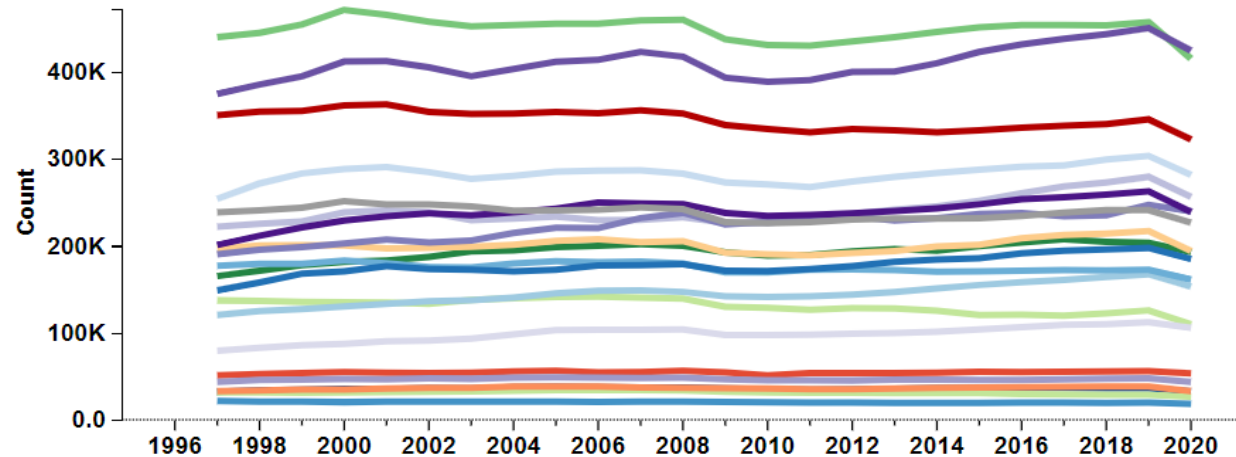
Firm Ownership: All Ownership

Firm Age/Size: None

Worker Characteristics: None

QWI Status Flags

Data not available to compute this estimate.



X-Axis

Yearly Averages

25 Years Selected

Normalize on X-Axis

Group

Counties

21 Counties Selected

Normalize on Group


	Atlantic, NJ	Bergen, NJ	Burlington, NJ	Camden, NJ	Cape May, NJ	Cumberland, NJ	Essex, NJ	Gloucester, NJ	Hud...
1996									
1997	138,099	440,581	165,984	197,545	33,698	51,840	351,112	80,351	
1998	137,705	445,772	172,113	201,443	34,541	53,326	355,237	83,649	
1999	136,519	455,307	178,818	201,734	35,793	54,394	356,001	86,450	

Tools for Data Consumption: FRED



Source: <https://fred.stlouisfed.org/>

Tools for Data Consumption: O*Net



O*NET OnLine

Occupation Quick Search:

[Help](#) [Find Occupations](#) [Advanced Search](#) [Crosswalks](#) [Share](#) [O*NET Sites](#)

Browse Bright Outlook Occupations



Bright Outlook occupations are expected to grow rapidly in the next several years, or will have large numbers of job openings.

Numerous Job Openings

Numerous Job Openings [Save Table \(XLS/CSV\)](#)

These occupations are projected¹ to **have 100,000 or more job openings** over the period 2019-2029 for the US nationwide.

Sort by:

[Code](#) [Occupation ▲](#)

13-2011.00	Accountants and Auditors	☀ Bright Outlook
29-1141.01	Acute Care Nurses	☀
29-1141.02	Advanced Practice Psychiatric Nurses	☀
35-3023.01	Baristas	☀
35-3011.00	Bartenders	☀
43-3031.00	Bookkeeping, Accounting, and Auditing Clerks	☀
41-2011.00	Cashiers	☀
39-9011.00	Childcare Workers	☀
29-1141.04	Clinical Nurse Specialists	☀
47-2061.00	Construction Laborers	☀
35-2014.00	Cooks, Restaurant	☀
29-1141.03	Critical Care Nurses	☀
43-4051.00	Customer Service Representatives	☀
25-2021.00	Elementary School Teachers, Except Special Education	☀

Tools for Data Consumption: O*Net

Summary Report for: 29-1141.04 - Clinical Nurse Specialists

Updated 2/2/1
Bright Outlook

Direct nursing staff in the provision of patient care in a clinical practice setting, such as a hospital, hospice, clinic, or home. Ensure adherence to established clinical policies, protocols, regulations, and standards.

Sample of reported job titles: Cardiology Clinical Nurse Specialist, Clinical Nurse Specialist, Critical Care Clinical Nurse Specialist, Emergency Clinical Nurse Specialist, ICU Clinical Nurse Specialist (Intensive Care Unit Clinical Nurse Specialist), Neuroscience Clinical Nurse Specialist, Pediatric Clinical Nurse Specialist, Psychiatric Adult Clinical Nurse Specialist, Trauma ICU Clinical Nurse Specialist (Trauma Intensive Care Unit Clinical Nurse Specialist)

View report: **Summary** | [Details](#) | [Custom](#) | [Easy Read](#) | [Veterans](#) | [Español](#)

[Tasks](#) | [Technology Skills](#) | [Tools Used](#) | [Knowledge](#) | [Skills](#) | [Abilities](#) | [Work Activities](#) | [Detailed Work Activities](#) | [Work Context](#) | [Job Zone](#) | [Education](#) | [Credentials](#) | [Interests](#) | [Work Styles](#) | [Work Values](#) | [Related Occupations](#) | [Wages & Employment](#) | [Job Openings](#) | [Additional Information](#)

Tasks

5 of 30 displayed

- ⊕ Evaluate the quality and effectiveness of nursing practice or organizational systems.
- ⊕ Collaborate with other health care professionals and service providers to ensure optimal patient care.
- ⊕ Develop and maintain departmental policies, procedures, objectives, or patient care standards, based on evidence-based practice guidelines or expert opinion.
- ⊕ Develop nursing service philosophies, goals, policies, priorities, or procedures.
- ⊕ Direct or supervise nursing care staff in the provision of patient therapy.

[back to top](#)

Technology Skills

5 of 8 displayed [Show 120 tools used](#)

- ⊕ **Electronic mail software** — Email software
- ⊕ **Medical software** — Bizmatics PrognoCIS EMR; GE Healthcare Centricity EMR; Medscribbler Enterprise; StatCom Patient Flow Logistics Enterprise Suite
- ⊕ **Office suite software** — Microsoft Office 🔥
- ⊕ **Presentation software** — Microsoft PowerPoint 🔥
- ⊕ **Spreadsheet software** — Microsoft Excel 🔥

🔥 Hot Technology — a technology requirement frequently included in employer job postings.

[back to top](#)

Knowledge

Additional Resources

- Bureau of Labor Statistics www.bls.gov
- US Census Bureau www.census.gov
- IPUMS <https://usa.ipums.org/usa/>
- Bureau of Economic Analysis www.bea.gov
- Projections Central www.projectionscentral.com
- Ohio LMI www.ohiolmi.com
- Your state's LMI site <http://www.bls.gov/bls/ofolist.htm>