

Improving Federal and State Policy to Support Family Engagement in Libraries

ALA Atlanta Midwinter Meeting
Saturday, January 21
10:30 AM – 11:30 AM
Meeting #235723
Georgia Convention Center, Room B217



Today's Speakers

- **Margaret Caspe, PhD**, Director of Research and Professional Learning, Global Family Research Project
- **Larra Clark**, Deputy Director, Public Library Association and ALA Office for Information Technology Policy
- **Johanna Pringle, MPH**, Title V Senior Manager, Maternal and Child Health Section, Georgia Department of Public Health
- **Scott G. Allen, MS**, Deputy Director, Public Library Association



The State of Family Engagement in Federal Policy

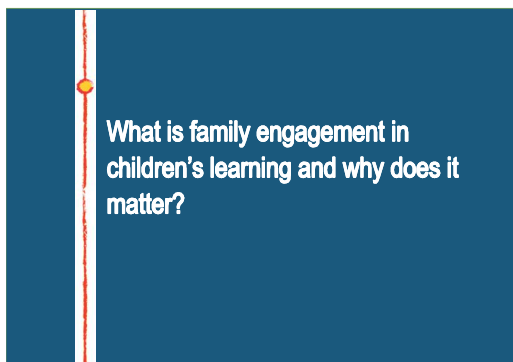
Margaret Caspe, PhD
Director of Research and Professional Learning
Global Family Research Project
www.globalfrp.org

Global Family Research Project



We believe all children and youth, from birth on, deserve quality learning opportunities and experiences.

Children learn anywhere, anytime. For all children to succeed, powerful family and community engagement and high-performing schools are essential.



Family Engagement Is a Shared Responsibility

Families:

Promote and advocate for children's learning and development from early childhood to young adulthood



Schools and communities:

Open doors for families to meaningfully participate in children's learning anywhere, anytime

Family Engagement Happens Anywhere



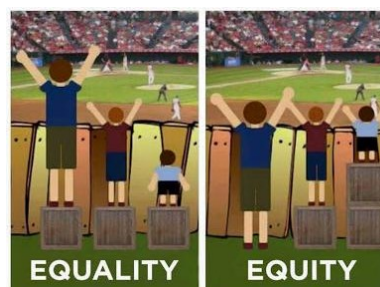
Family Engagement Happens Across Time



Family Engagement Improves Children's Outcomes



Family Engagement Is a Matter of Equity



Credit: United Way of the Columbia-Willamette

What is the state of federal family engagement policy?

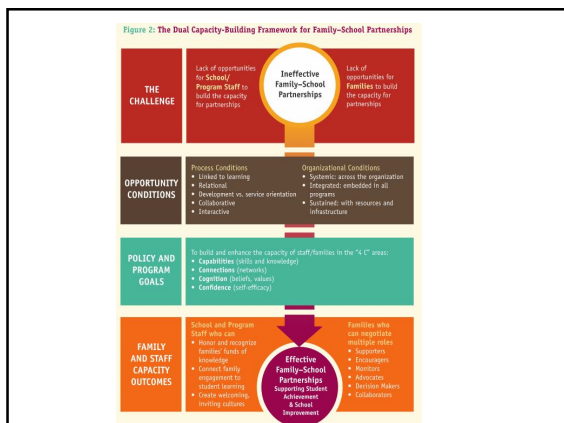
U. S. Department of Education

Every Student Succeeds Act (ESSA)

Title 1 Parent and Family Engagement Set-Aside

- Supporting schools in training school staff in family engagement strategies
- Supporting programs that reach families in the home, community, and school
- Disseminating information on best practices to support learning





U. S. Department of Education

Every Student Succeeds Act (ESSA)

21st Century Community Learning Centers

- Programs to provide student supports, academic enrichment, extended learning, afterschool and family engagement programming.



U. S. Department of Education

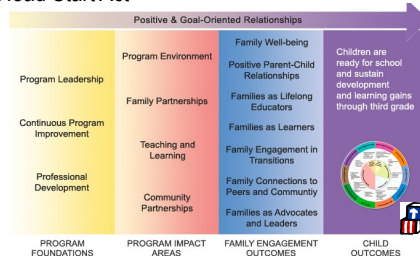
Individuals with Disabilities Education Act (IDEA)

- Under IDEA, families have a say in the educational decisions the school makes about a child and gives families special rights and protections.



U. S. Department of Health and Human Services

Head Start Act



U. S. Department of Health and Human Services

Title V of the Social Security Act

Maternal and Child Health Block Grant

- Access to quality care, especially for people with low-incomes
- Access to comprehensive prenatal and postnatal care
- Increase in health assessments and follow-up diagnostic treatments
- Family-centered, community based systems of care for special healthcare needs



Additional federal-level family engagement initiatives

Department /Agency	Programs with embedded family engagement
<ul style="list-style-type: none"> Department of Justice 	<ul style="list-style-type: none"> Juvenile justice programming
<ul style="list-style-type: none"> Department of Health and Human Services 	<ul style="list-style-type: none"> Federal Home Visiting Program
<ul style="list-style-type: none"> Department of Agriculture, Food and Nutrition Services 	<ul style="list-style-type: none"> Special Supplemental Food Program for Women, Infants and Children (WIC)
<ul style="list-style-type: none"> National Science Foundation 	<ul style="list-style-type: none"> Science-focused grants
<ul style="list-style-type: none"> Institute for Museum and Library Sciences 	<ul style="list-style-type: none"> Library and museum-focused grants

Barriers and Challenges

- Fragmentation
- Limited investments in and use of monitoring and capacity building
- Lack of prioritization of pre- and in-service professional training



Weiss, H. B., & Stephen, N. (2010). From periphery to center: A new vision for family, school, and community partnerships. In S. Christenson & A. Reischly (Eds.), *Handbook of school/family partnerships* (pp. 448-472). New York: Routledge

What are new trends and opportunities for library leaders?

Building Infrastructure to Move Beyond Random Acts



U.S. DEPARTMENT OF HEALTH AND HUMAN SERVICES
U.S. DEPARTMENT OF EDUCATION

POLICY STATEMENT ON FAMILY ENGAGEMENT FROM THE EARLY YEARS TO THE EARLY GRADES

May 5, 2016

PURPOSE

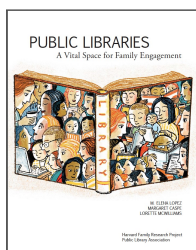
This policy statement from the U.S. Departments of Health and Human Services (HHS) and Education (ED) provides recommendations to early childhood systems and programs on family engagement. Family engagement refers to the systematic inclusion of families in activities and programs that promote children's development, learning, and wellness, including in the planning, development, and evaluation of such activities, programs, and systems. For family engagement to be integrated throughout early

<https://www2.ed.gov/about/initiatives/ed/earlylearning/families.html>

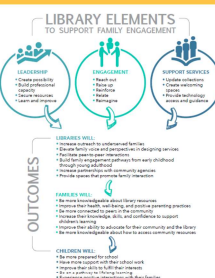
Focusing on State-Level Initiatives



Developing New Partnerships



A Framework to Support Family Engagement in Children's Learning through Libraries



Stay in Touch!



Visit & Subscribe
www.globalfrp.org



Send an Email:
margaret_caspe@globalfrp.org



Follow Us
[@Globalfrp](https://twitter.com/Globalfrp)



Like Us
facebook.com/GlobalFamilyResearchProject



ALA American Library Association

Supporting Early Childhood Learning & Family Engagement

ALA and IMLS federal advocacy

- Library funding
- Advocacy with and comments filed
 - Department of Education
 - Health and Human Services
 - Domestic Policy Council
- Collaborations
 - Administration for Children and Families
 - Campaign for Grade-Level Reading
 - Reach Out and Read
 - Build

National Policy Agenda for Libraries

- "Libraries are instrumental in education and learning for all ages. For children in their first years of life, early learning programming and services boost school readiness for young children and directly serve parents and caregivers as their children's first teachers. Many libraries also have outreach programs to Head Start and child care centers."



<http://www.ala.org/advocacy/pp/pub/revolution>

Next steps

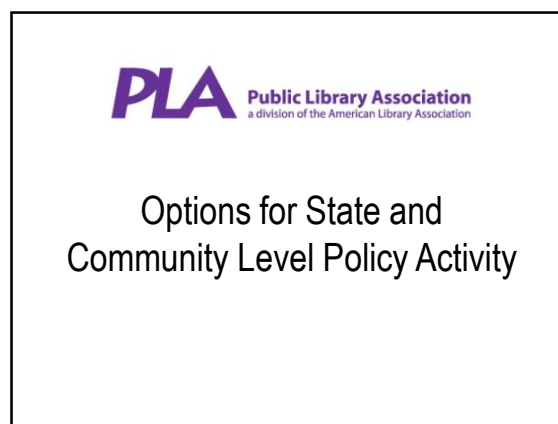
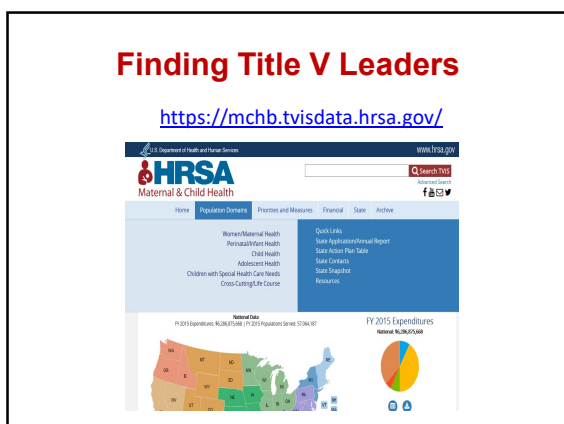
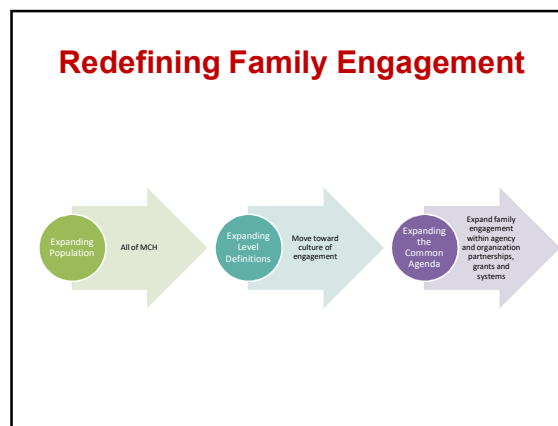
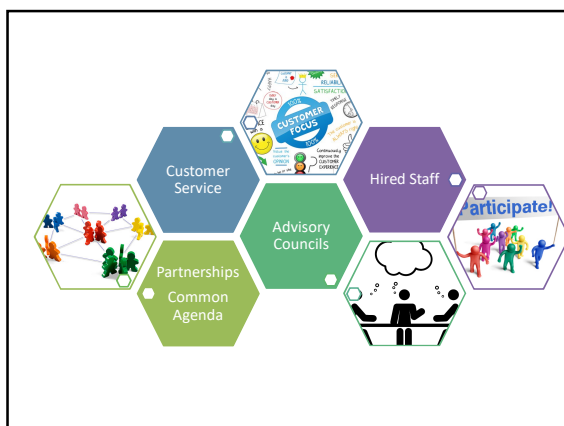
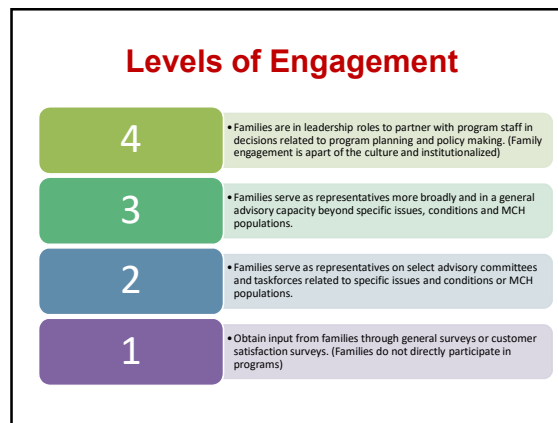
- Rare area of bipartisan interest and support
- Leverage research and model examples
- Deepen collaborations and partnerships in advocacy



Family Engagement: Georgia's Title V MCH Program

Johanna Pringle, MPH
Senior, Title V Manager

We Protect Lives.





- Simple actions
- Start small
- Elevate community successes
- Share what you do with ALA/PLA



With local school districts

- Influence their family engagement policies
- Promote the public library
- Join local networks



With state education agencies

- Find and influence 21st CCLC program funds



With IDEA Part C Early Intervention

- Identify local Part C service providers
- Educate them about library programs
- Establish policy that encourages providers to refer to libraries



Other Steps

- Identify and maintain contacts with policymakers and agency staff
- Join coalitions



Questions?