

2020-2021 ALA CD# 13.2

2021 ALA Virtual Annual Conference



Treasurer's Report Membership Information Session and Virtual Membership Meeting

Sunday, June 27, 2021

2021 ALA Virtual Annual Conference

Maggie Farrell, ALA Treasurer

Topics for Discussion

- Membership Value
- Preliminary FY22 Budget Timetable
 - Budget Directives
 - Overview
- Annual Estimates of Income
- Draft 5-Year Financial Plan
- FY20 Audit
- Operating Agreement Workgroup Update

WAYS YOU CAN USE YOUR MEMBERSHIP TO MEET YOUR PROFESSIONAL GOALS

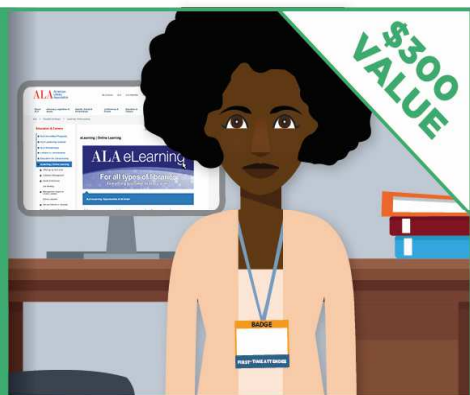
Connect with information about libraries, library work, association news, and other topics of interest to the profession through your ***American Libraries*** subscription.



Benchmark your salary to understand the value your expertise brings to the community through the **ALA-APA Salary Survey Database**.



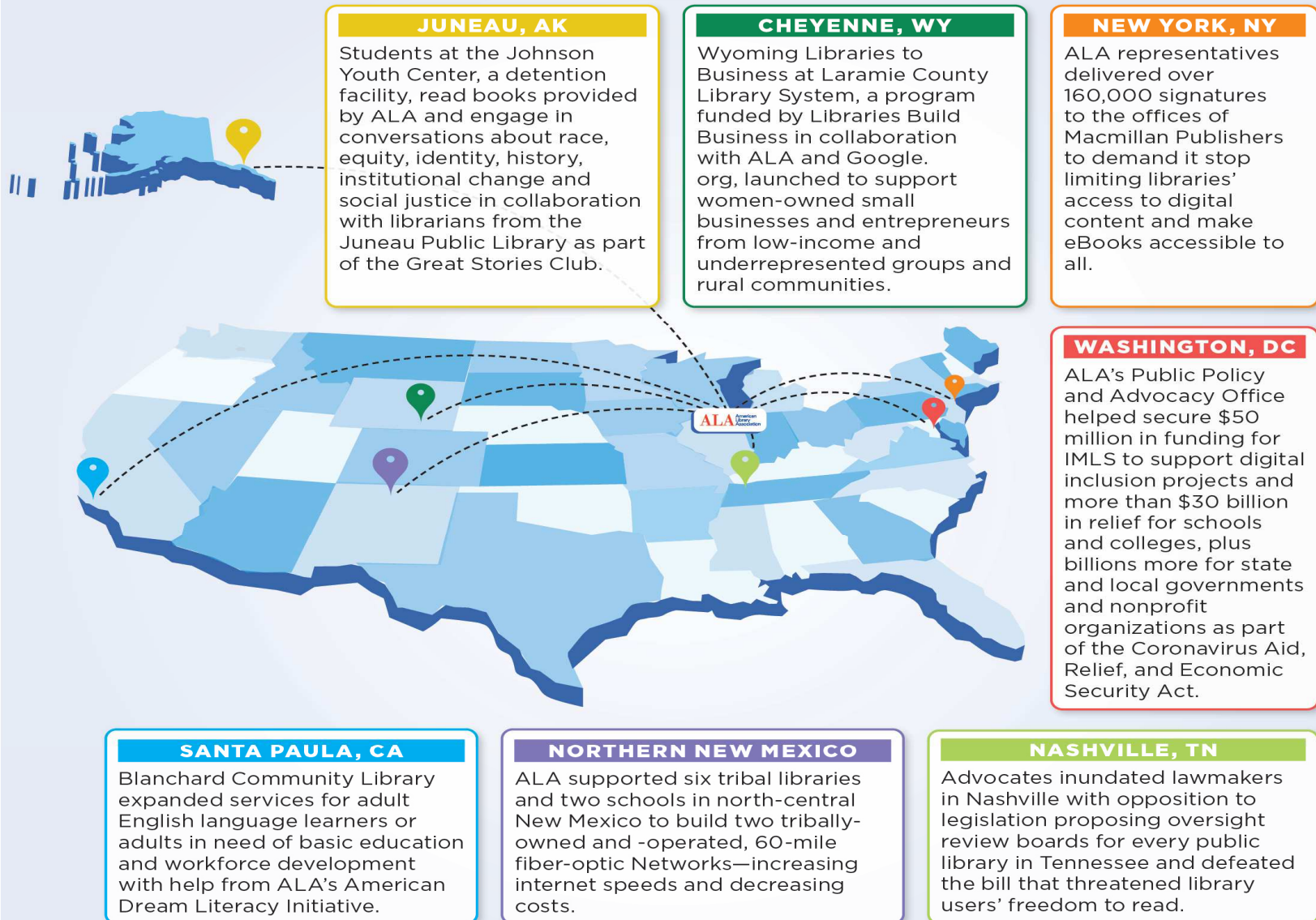
Expand your skill set through **conferences, webinars, certifications, and courses** for any job in every type of library including two webinars bundled with your membership.



Crowdsource ideas and solutions from a community of 55,000 library workers—and collaborate as part of a volunteer group—across the globe through **ALA Connect**.



WAYS YOUR MEMBERSHIP DOLLARS SUPPORTED THE FUNDAMENTAL WORK OF LIBRARIES IN 2020



FY22 Budget Timetable

- 2nd Review of FY22 draft budget
- Council approve FY22 AEI
- Final budget review/approval Fall
- Budget directives by BARC and EB

Budget Directives

- Bring forward a final balanced FY22 budget
- Build a contingency fund to manage unexpected events and include a budget line to reflect it
- Examine financial projections for LibLearnX and Annual 2022 for a pragmatic forecast and provide data supporting the assumptions
- Align expenditures with revenue projections (understanding division conference cycle)

Preliminary FY22 Budget Overview

American Library Association Statement of Revenues and Expenses - Total ALA

						(\$,000)
	2019 Actual	2020 Actual	2021 February Close	2021 Budget	2021 Projection	2022 Budget
Revenues						
General Fund	27,020	18,598	9,193	21,735	19,970	28,245
Divisions	13,435	15,004	4,725	11,167	9,928	13,558
Round Tables	687	494	347	572	572	502
Grants and Awards	7,310	21,776	553	5,470	5,470	4,326
Total Revenues	48,453	55,872	14,819	38,944	35,941	46,632
Expenses						
General Fund	31,397	28,340	11,240	21,519	21,461	29,322
Divisions	14,151	14,306	4,333	12,291	9,725	13,889
Round Tables	512	238	93	349	349	462
Grants and Awards	6,916	5,604	3,108	5,500	5,500	4,326
Total Expenses	52,975	48,488	18,775	39,659	37,035	47,998

Note: GF revenue includes FY22 \$1.5 million Endowment Fund Transfer with Terms

Preliminary FY22 Budget Overview (continued)

Statement of Revenues and Expenses - Total ALA

Net Rev/(Exp) From Operations

General Fund	(4,376)	(9,741)	(2,047)	216	(1,491)	(1,076)
Divisions	(717)	698	392	(1,124)	203	(331)
Round Tables	176	256	253	223	223	41
Grants and Awards	395	16,172	(2,555)	(30)	(30)	(0)
Subtotal Net Rev/(Exp) From Operations	(4,522)	7,384	(3,956)	(715)	(1,094)	(1,367)
Paycheck Protection Program (PPP) loan relief	0	0	0	0	0	1,000
Total Net Rev/(Exp) From Operations	(4,522)	7,384	(3,956)	(715)	(1,094)	(367)

175 Travel (or other) Expense reductions

455 Executive Office & AED Expense reductions

630 Total Expense reductions

263 FY22 Contingency

Annual Estimates of Income

Per Article IX, Finances, Section 1 of ALA's Bylaws: Annual estimates of income shall be based upon the unexpended balance remaining from the previous year plus anticipated revenues for the next budget year. BARC is charged with reviewing and approving the Annual Estimates of Income.

	TOTAL ALA	
	(\$,000)	
ALA Net Assets (projected at end of FY 2021)	\$	27,231
FY 2022 Budgeted Revenues		
General Fund		28,245
Divisions		13,558
Roundtables		502
Grants & Awards		4,326
Endowment		(794)
TOTAL		45,837
FY 2022 Annual Estimates of Income	\$	73,068

Draft Five Year Financial Plan

- Increase and retain membership inc. stakeholders and partners
- Diversify and increase revenue streams
- Continuing Education – increase and coordinate
- Examine conferences
- Streamline and align internal operations
- Benchmarking

EBD#3.32

FY20 Audit Update

- FY20 Budget completed
- Annual Audit currently underway

Operating Agreement WG Update

- EBD#10.15
- Relationship between ALA and Divisions
- Last revision – 1989
- Focus on our unity and strengths
- Facilitate collaboration and innovation
- Members always the core
- Support shared operations and values
- Role of the Overhead Rate
- Future consideration of Roundtable relationship
- Request to extend Work Group for one additional year

Discussion

Handy List of References:

[Draft FY22 Budget – EBD#3.28](#)

[Draft Five Year Financial Plan – EBD#3.32](#)

[Pivot Plan – CD#36](#)

[Operating Agreement Work Group website](#)

[ALA Treasurer's Page](#) inc. Financial Learning Series