

## Start Your Joint ALA-Chapter Membership

Join at [www.ala.org/groups/joint-membership-program](http://www.ala.org/groups/joint-membership-program)  
or call 800-545-2433, option 5.

The following Chapters (state library associations) allow students to join them and ALA for one low price of \$38, from now through August 31, 2017.

### Participating State Library Associations (Chapters):

- Alabama
- Alaska
- Arizona
- Arkansas
- California
- Connecticut
- Delaware
- District of Columbia
- Georgia
- Hawaii
- Idaho
- Indiana
- Kansas
- Kentucky
- Louisiana
- Maine
- Maryland
- Massachusetts
- Michigan
- Minnesota
- Mississippi
- Missouri
- Montana
- Nevada
- New Jersey
- New York
- North Carolina
- Ohio
- Oklahoma
- Oregon
- Pennsylvania
- Rhode Island
- South Carolina
- South Dakota
- Tennessee
- Texas
- Vermont
- Washington
- Wisconsin

Save time and postage; join two  
great associations for one low price.

Join online at

[www.ala.org/groups/joint-membership-program](http://www.ala.org/groups/joint-membership-program)

MD-0917

# Joint Student Members are full members of both associations.

### Membership benefits include:

#### From **ALA**

- 6 issues of *American Libraries*, the magazine of the association (a \$70 subscription included in dues)
- Weekly delivery via email of *ALDirect*, the industry leader for news affecting the future of the profession
- *Student ALDirect*, the e-newsletter specifically focusing on news and information to students, delivered monthly throughout the academic year
- Access to ALA scholarships, grants, awards and travel opportunities
- Substantial discounts on ALA and Divisional Conferences
- 10% members-only discounts on ALA publications and graphics
- Access to auto and home insurance through ALA affinity providers

#### From **OLA**

- Workshops, Problem Solving, National Speakers, Legislative Advocacy, Conferences, Networking, Lifelong Friendships, Electronic Newsletter, Information provided on Web Page, Electronic Discussion List, Facebook and Twitter.

[www.oklibs.org](http://www.oklibs.org)

**ALA** | American  
MEMBERSHIP | Library  
Association

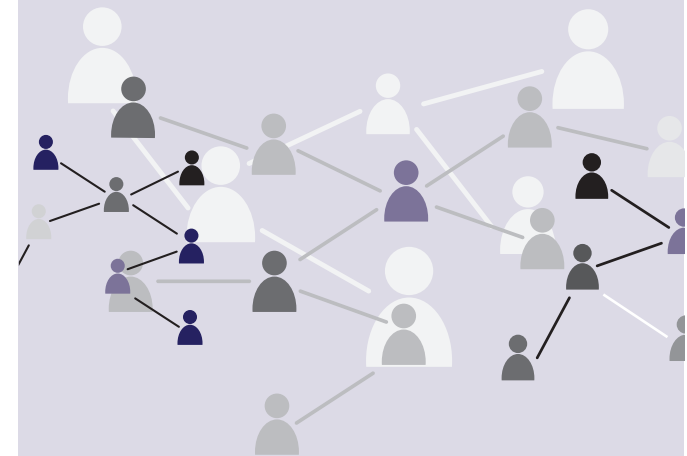
50 E. Huron St | Chicago, IL. 60611

[www.ala.org/membership](http://www.ala.org/membership)

SPECIAL MEMBERSHIP OFFER FROM  
**ALA** and **Oklahoma Library Association**

## Joint Membership for Library and Information Science Students

**\$38.00**  
PER YEAR  
over a \$50  
value!



Join both your state and national library  
associations and get connected to your future.

Now you can join online at  
[www.ala.org/groups/joint-membership-program](http://www.ala.org/groups/joint-membership-program)

# About ALA

The American Library Association (ALA) works for students by advocating for increased library funding and the ongoing development of the profession. Through our accreditation program, ALA ensures that the training you receive will prepare you for your chosen career.

## Job Resources

ALA will help you with resources to find your first job and to remain competitive. ALA student members have access to the best network of career and professional development resources for library workers.

## Divisions and Round Tables

You need more than classwork to be fully prepared for your career. Joining ALA divisions and round tables is an excellent way to build experience in your specialty by meeting and working with longtime professionals. Student members can take advantage of ALA resources like résumé review services, job placement events, and car & home insurance.

To learn more about ALA and our divisions or round tables, visit [www.ala.org](http://www.ala.org) or call 1-800-645-2433, ext 5.



# About OLA

Student members are introduced to the workings of the Oklahoma Library Association by receipt of all information sent to any member, availability of the web page, electronic discussion list, and Facebook and Twitter accounts. Student members are eligible to participate in any of OLA's divisions and round tables, and, if interested, may be appointed to a working committee. There are many, many opportunities to network with other members of the association and to participate in numerous continuing education events. Students are encouraged to volunteer at the Annual Conference and those who do volunteer for four hours receive complimentary registration for that day. A minimum of three scholarships are presented to graduate students each year.

## OLA Interest Groups

**Divisions:** Oklahoma School Librarians, Public Libraries, University and College

**Round tables:** Children and Teen Services, Government Documents, Information Technology, Social Responsibilities, Supervisors/Managers/Administrators, and Technical Services

**Committees:** Archives, Awards, Career, Recruitment & Retention, Communications, Constitution and Bylaws, Continuing Education, Endowment, Ethics, Intellectual Freedom, Legislative, Long Range Planning, Marketing, Membership, OLA Gold Leadership Institute, Resolutions, Scholarship, Sequoyah, Sites, and Vendor Relations

**NOTE:** Membership in OLA Divisions and round tables is \$2 each, except for Oklahoma School Librarians which is \$10. If interested in joining, contact [exec\\_director@oklibs.org](mailto:exec_director@oklibs.org) or 405-525-5100.

## Joint Student Membership Application

Joint Student Members are eligible to join ALA divisions. If you have special interests, consider joining a division. See special student rates below:

### Divisional Dues

American Association of School Librarians (AASL)	\$35
Assoc. of College and Research Libraries (ACRL)	\$41
Assoc. for Library Collections & Technical Services (ALCTS)	\$15
Assoc. for Library Service to Children (ALSC)	\$20
Assoc. of Specialized and Coop. Library Agencies (ASCLA)	\$20
Library Leadership and Management Association (LLAMA)	\$15
Library and Information Technology Assoc. (LITA)	\$25
Public Library Association (PLA)	\$32
Reference and User Services Association (RUSA)	\$25
United for Libraries (UL)	\$20
Young Adult Library Services Association (YALSA)	\$25

### Round Table Dues

Joint Student Members are also eligible to join any of the ALA round tables. The following have special rates for student membership. Please visit [www.ala.org/groups/rts](http://www.ala.org/groups/rts) for a complete list.

Ethnic and Multicultural Information Exchange (EMIERT)	\$10
Federal and Armed Forces Librarians (FAFLRT)	FREE
Gaming (GAMERT)	\$10
Gay, Lesbian, Bisexual and Transgendered (GLBTRT)	\$5
Government Documents (GODORT)	\$10
Intellectual Freedom (IFRT)	\$5
International Relations (IRRT)	\$5
Library History (LHRT)	\$5
Library Research (LRRT)	\$15
Doctoral students	FREE
Map and Geospatial Information (MAGIRT)	\$10
New Members (10-year limit) (NMRT)	\$10
Social Responsibilities (SRRT)	FREE
Sustainability (SustainRT)	\$10
Video (VRT)	FREE

Save time and postage; join two great associations for one low price.

Join online at

[www.ala.org/groups/joint-membership-program](http://www.ala.org/groups/joint-membership-program)