

## Start Your Joint ALA-Chapter Membership

Join at [www.ala.org/groups/joint-membership-program](http://www.ala.org/groups/joint-membership-program)  
or call 800-545-2433, option 5.

The following Chapters (state library associations) allow students to join them and ALA for one low price of \$38, from now through August 31, 2017.

### Participating State Library Associations (Chapters):

- Alabama
- Alaska
- Arizona
- Arkansas
- California
- Connecticut
- Delaware
- District of Columbia
- Georgia
- Hawaii
- Idaho
- Indiana
- Kansas
- Kentucky
- Louisiana
- Maine
- Maryland
- Massachusetts
- Michigan
- Minnesota
- Mississippi
- Missouri
- Montana
- Nevada
- New Jersey
- New York
- North Carolina
- Ohio
- Oklahoma
- Oregon
- Pennsylvania
- Rhode Island
- South Carolina
- South Dakota
- Tennessee
- Texas
- Vermont
- Washington
- Wisconsin

Save time and postage; join two  
great associations for one low price.

Join online at

[www.ala.org/groups/joint-membership-program](http://www.ala.org/groups/joint-membership-program)

MD-0917

# Joint Student Members are full members of both associations.

### Membership benefits include:

#### From **ALA**

- ALA Student Portal offering access to valuable information and student resources
- Access to ALA scholarships, grants, awards, and travel opportunities
- *Student ALDirect*, the e-newsletter specifically focused on news and information for students, delivered bi-monthly
- *ALDirect*, the industry leader for news affecting the future of the profession, delivered weekly via email
- *American Libraries*, the ALA magazine (a \$70 subscription included in dues), 6 issues
- Substantial discounts on ALA and Divisional Conferences and 10% members-only discounts on ALA publications and graphics

#### From **NCLA**

- Free subscription to the annual online *NC Library Journal*, legislative updates; Library-related news feeds and access to NCLA listserv.

[www.nclaonline.org](http://www.nclaonline.org)

**ALA** | American  
MEMBERSHIP | Library  
Association

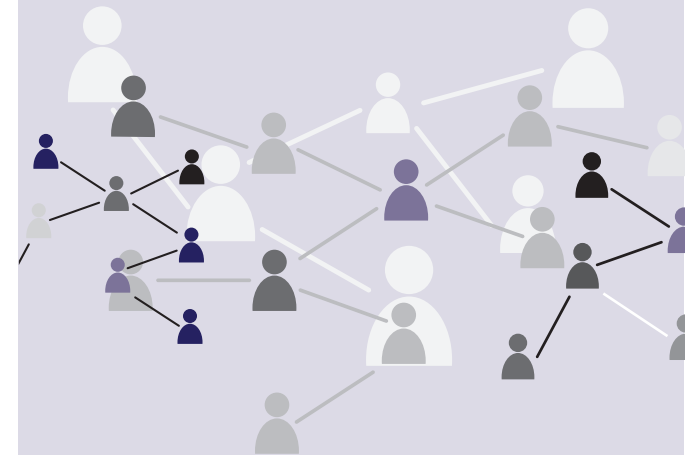
50 E. Huron St | Chicago, IL. 60611

[www.ala.org/membership](http://www.ala.org/membership)

SPECIAL MEMBERSHIP OFFER FROM  
**ALA and North Carolina Library Association**

## Joint Membership for Library and Information Science Students

**\$38.00**  
PER YEAR  
over a \$50  
value!



Join both your state and national library  
associations and get connected to your future.

Now you can join online at  
[www.ala.org/groups/joint-membership-program](http://www.ala.org/groups/joint-membership-program)

# About ALA

The American Library Association (ALA) works for students by advocating for increased library funding and the ongoing development of the profession. Through our accreditation program, ALA ensures that the training you receive will prepare you for your chosen career.

## Job Resources

ALA will help you with resources to find your first job and to remain competitive. ALA student members have access to the best network of career and professional development resources for library workers.

## Divisions and Round Tables

You need more than classwork to be fully prepared for your career. Joining ALA divisions and round tables is an excellent way to build experience in your specialty by meeting and working with longtime professionals. Student members can take advantage of ALA resources like résumé review services, job placement events, and car & home insurance.

To learn more about ALA and our divisions or round tables, visit [www.ala.org](http://www.ala.org) or call 1-800-645-2433, ext 5.



# About NCLA

Student members of the North Carolina Library Association have a unique opportunity to broaden their experience outside of the classroom and connect with the issues that affect our profession. Our membership includes hundreds of library professionals dedicated to the future of North Carolina libraries. Your membership offers access to the networking opportunities that will benefit your work life and connect you with your future.

Join NCLA and learn about librarianship and information management in "real world" context. Find a mentor and be exposed to a wide variety of libraries and library issues. Student members are called upon not only to learn, but to lead. Your work life is accelerated through your membership in NCLA. You'll have hundreds of opportunities through committees and work groups to build your résumé while serving the needs of the profession.

## NCLA Interest Groups

### NCLA Section and Roundtables

NCLA Student Membership empowers you to participate in a wide range of professional issues, from standard library practices to emerging areas of innovation. The North Carolina Library Association offers sections and round tables for the librarians' every role (reference, collections, youth services, management, and many more). Every group offers opportunities to connect with other students who have similar interests and veteran professionals who can become resources, mentors, and even potential employers.

New joining NCLA members will receive one complimentary membership in the New Members round table section for 2 years. New and renewing members will receive one complimentary section or roundtable for one year. In addition, students can receive significant discounts on continuing education events, ranging from monthly webinars to the biennial conference.

If you would like to join a section or round table for your state, contact the state chapter office directly at [nclaonline@gmail.com](mailto:nclaonline@gmail.com).

## Joint Student Membership Application

Joint Student Members are eligible to join ALA divisions. If you have special interests, consider joining a division. See special student rates below:

### Divisional Dues

American Association of School Librarians (AASL)	\$35
Assoc. of College and Research Libraries (ACRL)	\$41
Assoc. for Library Collections & Technical Services (ALCTS)	\$15
Assoc. for Library Service to Children (ALSC)	\$20
Assoc. of Specialized and Coop. Library Agencies (ASCLA)	\$20
Library Leadership and Management Association (LLAMA)	\$15
Library and Information Technology Assoc. (LITA)	\$25
Public Library Association (PLA)	\$32
Reference and User Services Association (RUSA)	\$25
United for Libraries (UL)	\$20
Young Adult Library Services Association (YALSA)	\$25

### Round Table Dues

Joint Student Members are also eligible to join any of the ALA round tables. The following have special rates for student membership. Please visit [www.ala.org/groups/rts](http://www.ala.org/groups/rts) for a complete list.

Ethnic and Multicultural Information Exchange (EMIERT)	\$10
Federal and Armed Forces Librarians (FAFLRT)	FREE
Gaming (GAMERT)	\$10
Gay, Lesbian, Bisexual and Transgendered (GLBTRT)	\$5
Government Documents (GODORT)	\$10
Intellectual Freedom (IFRT)	\$5
International Relations (IRRT)	\$5
Library History (LHRT)	\$5
Library Research (LRRT)	\$15
Doctoral students	FREE
Map and Geospatial Information (MAGIRT)	\$10
New Members (10-year limit) (NMRT)	\$10
Social Responsibilities (SRRT)	FREE
Sustainability (SustainRT)	\$10
Video (VRT)	FREE

Save time and postage; join two great associations for one low price.

Join online at

[www.ala.org/groups/joint-membership-program](http://www.ala.org/groups/joint-membership-program)