

## Start Your Joint ALA-Chapter Membership

Join at [www.ala.org/groups/joint-membership-program](http://www.ala.org/groups/joint-membership-program)  
or call 800-545-2433, option 5.

The following Chapters (state library associations) allow students to join them and ALA for one low price of \$38, from now through August 31, 2017.

### Participating State Library Associations (Chapters):

- Alabama
- Alaska
- Arizona
- Arkansas
- California
- Connecticut
- Delaware
- District of Columbia
- Georgia
- Hawaii
- Idaho
- Indiana
- Kansas
- Kentucky
- Louisiana
- Maine
- Maryland
- Massachusetts
- Michigan
- Minnesota
- Mississippi
- Missouri
- Montana
- Nevada
- New Jersey
- New York
- North Carolina
- Ohio
- Oklahoma
- Oregon
- Pennsylvania
- Rhode Island
- South Carolina
- South Dakota
- Tennessee
- Texas
- Vermont
- Washington
- Wisconsin

Save time and postage; join two  
great associations for one low price.

Join online at

[www.ala.org/groups/joint-membership-program](http://www.ala.org/groups/joint-membership-program)

MD-0917

## Joint Student Members are full members of both associations.

### Membership benefits include:

#### From **ALA**

- ALA Student Portal offering access to valuable information and student resources
- Access to ALA scholarships, grants, awards, and travel opportunities
- *Student ALDirect*, the e-newsletter specifically focused on news and information for students, delivered bi-monthly
- *ALDirect*, the industry leader for news affecting the future of the profession, delivered weekly via email
- *American Libraries*, the ALA magazine (a \$70 subscription included in dues), 6 issues
- Substantial discounts on ALA and Divisional Conferences and 10% members-only discounts on ALA publications and graphics

#### From **MLA**

- An opportunity to network with other Mississippi librarians
- An avenue for scholarships and grant opportunities
- A mechanism to learn from other library professionals
- A forum for presentations and publications
- A way to gain organizational and leadership experience
- A chance to make a difference for Mississippi libraries
- A way to contribute expertise to the library profession
- A connection for everyone interested in libraries
- A chance to attend presentations from key leaders in librarianship
- Support for libraries and library advocacy for your local needs
- An opportunity to participate in and influence the legislation affecting libraries
- A cost-effective way to be involved with low membership fees, tailored to earnings
- A link to regional and national library associations
- A way to receive the state publication *Mississippi Libraries*
- A demonstration of commitment to the library profession

[www.misslib.org](http://www.misslib.org)

**ALA** | American  
MEMBERSHIP | Library  
Association

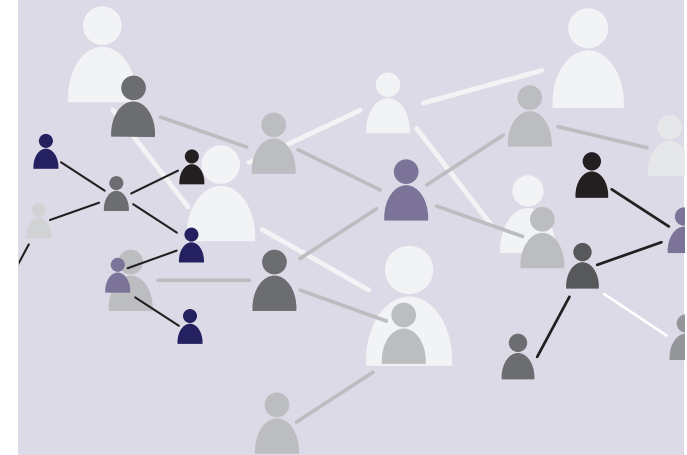
50 E. Huron St | Chicago, IL. 60611

[www.ala.org/membership](http://www.ala.org/membership)

SPECIAL MEMBERSHIP OFFER FROM  
**ALA and Mississippi Library Association**

## Joint Membership for Library and Information Science Students

**\$38.00**  
PER YEAR  
over a \$50  
value!



Join both your state and national library  
associations and get connected to your future.

Now you can join online at  
[www.ala.org/groups/joint-membership-program](http://www.ala.org/groups/joint-membership-program)

# About ALA

The American Library Association (ALA) works for students by advocating for increased library funding and the ongoing development of the profession. Through our accreditation program, ALA ensures that the training you receive will prepare you for your chosen career.

## Job Resources

ALA will help you with resources to find your first job and to remain competitive. ALA student members have access to the best network of career and professional development resources for library workers.

## Divisions and Round Tables

You need more than classwork to be fully prepared for your career. Joining ALA divisions and round tables is an excellent way to build experience in your specialty by meeting and working with longtime professionals. Student members can take advantage of ALA resources like résumé review services, job placement events, and car & home insurance.

To learn more about ALA and our divisions or round tables, visit [www.ala.org](http://www.ala.org) or call 1-800-645-2433, ext 5.



# About MLA

MLA's mission is to provide professional leadership for the development, promotion, and improvement of library and information services, as well as the profession of librarianship, in order to enhance learning and ensure access to information for all.

## MLA Interest Groups

### Special Interest Groups

MLA believes in empowering you to participate in a wide range of professional and advocacy related issues, and does so by offering all members the opportunity to participate in special interest groups. These groups focus on the ever-changing roles of libraries and librarians and allow individual organizations to network and create resources that may have been limited before. For more information about special interest groups, including how to join them at little to no cost, please contact the Mississippi Library Association.

## Joint Student Membership Application

Joint Student Members are eligible to join ALA divisions. If you have special interests, consider joining a division. See special student rates below:

### Divisional Dues

American Association of School Librarians (AASL)	\$35
Assoc. of College and Research Libraries (ACRL)	\$41
Assoc. for Library Collections & Technical Services (ALCTS)	\$15
Assoc. for Library Service to Children (ALSC)	\$20
Assoc. of Specialized and Coop. Library Agencies (ASCLA)	\$20
Library Leadership and Management Association (LLAMA)	\$15
Library and Information Technology Assoc. (LITA)	\$25
Public Library Association (PLA)	\$32
Reference and User Services Association (RUSA)	\$25
United for Libraries (UL)	\$20
Young Adult Library Services Association (YALSA)	\$25

### Round Table Dues

Joint Student Members are also eligible to join any of the ALA round tables. The following have special rates for student membership. Please visit [www.ala.org/groups/rts](http://www.ala.org/groups/rts) for a complete list.

Ethnic and Multicultural Information Exchange (EMIERT)	\$10
Federal and Armed Forces Librarians (FAFLRT)	FREE
Gaming (GAMERT)	\$10
Gay, Lesbian, Bisexual and Transgendered (GLBTRT)	\$5
Government Documents (GODORT)	\$10
Intellectual Freedom (IFRT)	\$5
International Relations (IRRT)	\$5
Library History (LHRT)	\$5
Library Research (LRRT)	\$15
Doctoral students	FREE
Map and Geospatial Information (MAGIRT)	\$10
New Members (10-year limit) (NMRT)	\$10
Social Responsibilities (SRRT)	FREE
Sustainability (SustainRT)	\$10
Video (VRT)	FREE

Save time and postage; join two great associations for one low price.

Join online at

[www.ala.org/groups/joint-membership-program](http://www.ala.org/groups/joint-membership-program)