

## Start Your Joint ALA-Chapter Membership

Join at [www.ala.org/groups/joint-membership-program](http://www.ala.org/groups/joint-membership-program)  
or call 800-545-2433, option 5.

The following Chapters (state library associations) allow students to join them and ALA for one low price of \$38, from now through August 31, 2017.

### Participating State Library Associations (Chapters):

- Alabama
- Alaska
- Arizona
- Arkansas
- California
- Connecticut
- Delaware
- District of Columbia
- Georgia
- Hawaii
- Idaho
- Indiana
- Kansas
- Kentucky
- Louisiana
- Maine
- Maryland
- Massachusetts
- Michigan
- Minnesota
- Mississippi
- Missouri
- Montana
- Nevada
- New Jersey
- New York
- North Carolina
- Ohio
- Oklahoma
- Oregon
- Pennsylvania
- Rhode Island
- South Carolina
- South Dakota
- Tennessee
- Texas
- Vermont
- Washington
- Wisconsin

Save time and postage; join two  
great associations for one low price.

Join online at

[www.ala.org/groups/joint-membership-program](http://www.ala.org/groups/joint-membership-program)

MD-0917

# Joint Student Members are full members of both associations.

### Membership benefits include:

#### From **ALA**

- ALA Student Portal offering access to valuable information and student resources
- Access to ALA scholarships, grants, awards, and travel opportunities
- *Student ALDirect*, the e-newsletter specifically focused on news and information for students, delivered bi-monthly
- *ALDirect*, the industry leader for news affecting the future of the profession, delivered weekly via email
- *American Libraries*, the ALA magazine (a \$70 subscription included in dues), 6 issues
- Substantial discounts on ALA and Divisional Conferences and 10% members-only discounts on ALA publications and graphics

#### From **MLA**

- Free subscription to *MLA-to-Z* newsletter, discounted registration for the MLA conferences and workshops, and eligibility for scholarships and interest-free loans.

<http://mainelibraries.org>

**ALA** | American  
MEMBERSHIP | Library  
Association

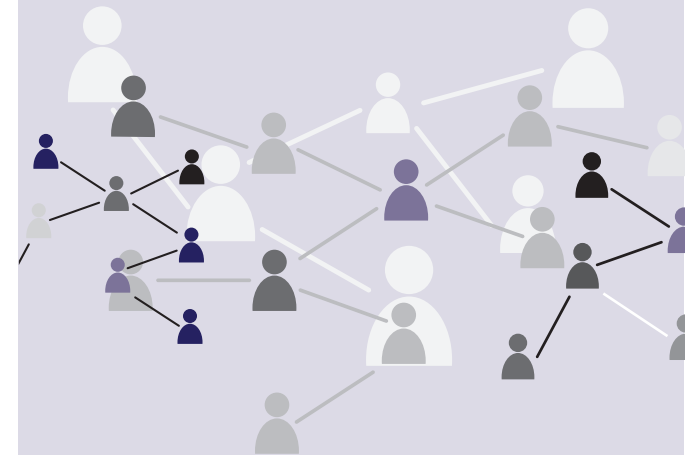
50 E. Huron St | Chicago, IL. 60611

[www.ala.org/membership](http://www.ala.org/membership)

SPECIAL MEMBERSHIP OFFER FROM  
**ALA and Maine Library Association**

## Joint Membership for Library and Information Science Students

**\$38.00**  
PER YEAR  
over a \$50  
value!



Join both your state and national library  
associations and get connected to your future.

Now you can join online at  
[www.ala.org/groups/joint-membership-program](http://www.ala.org/groups/joint-membership-program)

# About ALA

The American Library Association (ALA) works for students by advocating for increased library funding and the ongoing development of the profession. Through our accreditation program, ALA ensures that the training you receive will prepare you for your chosen career.

## Job Resources

ALA will help you with resources to find your first job and to remain competitive. ALA student members have access to the best network of career and professional development resources for library workers.

## Divisions and Round Tables

You need more than classwork to be fully prepared for your career. Joining ALA divisions and round tables is an excellent way to build experience in your specialty by meeting and working with longtime professionals. Student members can take advantage of ALA resources like résumé review services, job placement events, and car & home insurance.

To learn more about ALA and our divisions or round tables, visit [www.ala.org](http://www.ala.org) or call 1-800-645-2433, ext 5.



# About MLA

Since 1891, the Maine Library Association has promoted library interests in the State of Maine. Over the years, MLA's membership has grown to over 400 librarians, support staff, and library supporters.

The mission of the Maine Library Association is to promote and enhance the value of Maine libraries and librarianship, to foster cooperation among those who work in and for Maine libraries, and to provide leadership in ensuring that information is accessible to all citizens from their libraries.

## Activities:

**Networking.** Provides networking opportunities with colleagues in Maine, New England and countrywide.

**Partnering.** Develops and fosters mutually beneficial working relationships with educational institutions, businesses, and organizations.

**Lobbying and Legislative Advocacy.** Increases the understanding and awareness of the legislative process among members, initiates challenges, and supports legislation affecting libraries.

**Conference and Continuing Education.** Develops continuing education and professional development opportunities; helps organize the annual Maine Libraries Conference and other regional forums.

## MLA Interest Groups

Members are entitled to join one free interest group per year. Membership in additional interest groups is only \$2 per year, per group. They are as follows:

The Archives & Special Collections group will appeal to special collections librarians, archivists and librarians responsible for manuscripts, rare books, and other "special" collections for those who are interested in such materials.

The Reference & Adult Services group is for reference, reader's advisory and adult services librarians, or those who are interested in such services. Along with creating a group to allow experts to network, a vital goal is to connect experts with librarians responsible for reference or adult services, but without prior training or experience.

The Youth Services Section (YSS) is focused on promoting and improving library service to young people. It is open to children's librarians as well as others interested in library service to young people.

## Joint Student Membership Application

Joint Student Members are eligible to join ALA divisions. If you have special interests, consider joining a division. See special student rates below:

## Divisional Dues

American Association of School Librarians (AASL)	\$35
Assoc. of College and Research Libraries (ACRL)	\$41
Assoc. for Library Collections & Technical Services (ALCTS)	\$15
Assoc. for Library Service to Children (ALSC)	\$20
Assoc. of Specialized and Coop. Library Agencies (ASCLA)	\$20
Library Leadership and Management Association (LLAMA)	\$15
Library and Information Technology Assoc. (LITA)	\$25
Public Library Association (PLA)	\$32
Reference and User Services Association (RUSA)	\$25
United for Libraries (UL)	\$20
Young Adult Library Services Association (YALSA)	\$25

## Round Table Dues

Joint Student Members are also eligible to join any of the ALA round tables. The following have special rates for student membership. Please visit [www.ala.org/groups/rts](http://www.ala.org/groups/rts) for a complete list.

Ethnic and Multicultural Information Exchange (EMIERT)	\$10
Federal and Armed Forces Librarians (FAFLRT)	FREE
Gaming (GAMERT)	\$10
Gay, Lesbian, Bisexual and Transgendered (GLBTRT)	\$5
Government Documents (GODORT)	\$10
Intellectual Freedom (IFRT)	\$5
International Relations (IRRT)	\$5
Library History (LHRT)	\$5
Library Research (LRRT)	\$15
Doctoral students	FREE
Map and Geospatial Information (MAGIRT)	\$10
New Members (10-year limit) (NMRT)	\$10
Social Responsibilities (SRRT)	FREE
Sustainability (SustainRT)	\$10
Video (VRT)	FREE

Save time and postage; join two great associations for one low price.

Join online at

[www.ala.org/groups/joint-membership-program](http://www.ala.org/groups/joint-membership-program)