



2013 - 14 ET #6.4
2013 – 14 CD #16.0
2013– 14 EBD #13.2
2013 – 14 Midwinter Meeting

Endowment Trustees Report

Council/Executive Board/Membership Information Session



Rod Hersberger – Senior Trustee
Saturday – January 25, 2014

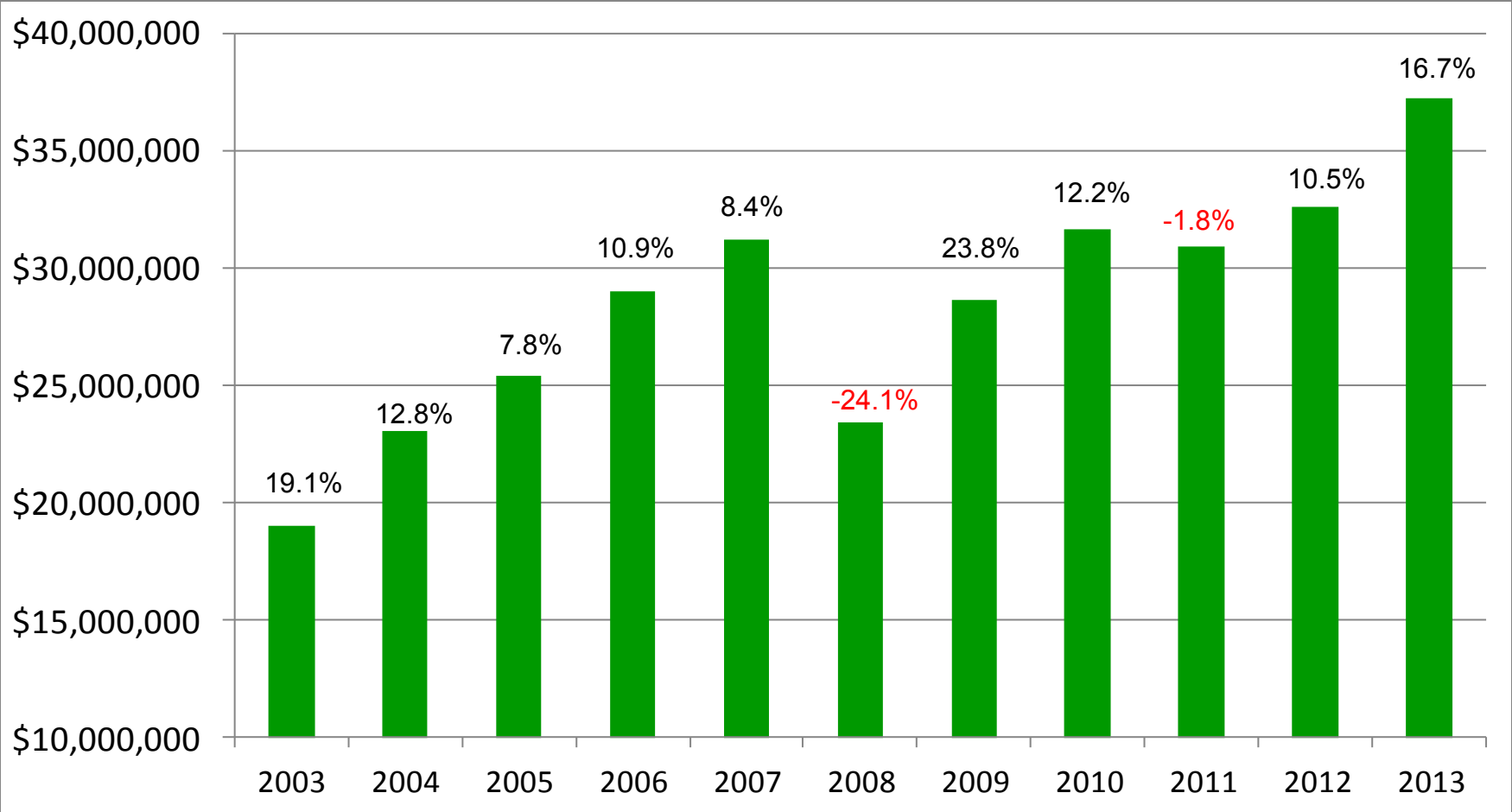
Issues Impacting the Market -2013



The linked image cannot be displayed. The file may have been moved, renamed, or deleted. Verify that the link points to the correct file and location.

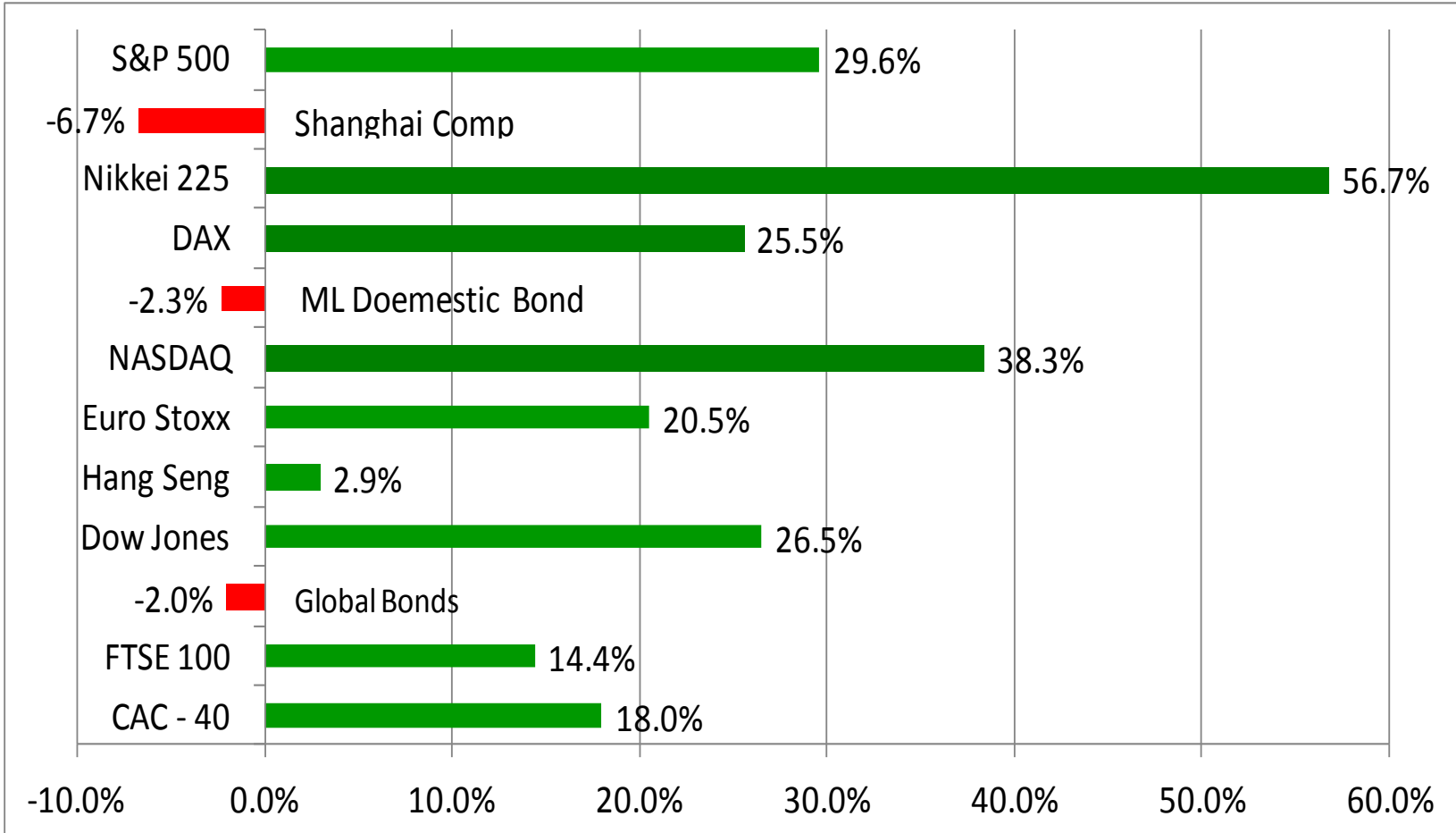
Market Value @ 12-31-13

\$37,288,932



World Market Performance

- Calendar Year Market Returns @ 12-31-13



American Library Association Investment Policy Statement

LONG-TERM INVESTMENT FUND

- ENDOWMENT FUND -

Investment Asset Class Allocations

Traditional Asset Allocation

- Small portfolios

- Equities
- Fixed Income (Bonds)

Asset Allocation

- Growing & more sophisticated portfolios

- Mutual Funds
- Alternatives
- ETF' s
- Real Estate Investment Trust' s (REIT' s)
- Convertibles (equities/bonds)
- Real Assets – real estate, commodities

Market Factors Impacting 2014

- The start and degree of Federal Reserve tapering
- Will other world central banks continue to provide more liquidity?
- The pace of economic recovery (US)
- The threat of declining inflation rates worldwide, particularly Europe – *deflation risk*
- Election results in the emerging markets may stunt recovery
- Impact of implementing China's economic overhaul – *moving from industrial sectors expansion / investment to consumer led growth*
- Will there be a recovery in commodities?

